

CAB13172

Product Information

Size:

20uL, 50uL, 100uL, 200uL

Observed MW:

29kDa

Calculated MW:

28kDa

Applications:

WB IHC

Reactivity:

Human, Mouse, Rat

Protein Background

The protein encoded by this gene, a member of the peptidase S1 protein family, is found in azurophilic granules of neutrophilic polymorphonuclear leukocytes. The encoded protease has a specificity similar to that of chymotrypsin C, and may participate in the killing and digestion of engulfed pathogens, and in connective tissue remodeling at sites of inflammation. In addition, the encoded protein is antimicrobial, with bacteriocidal activity against *S. aureus* and *N. gonorrhoeae*. Transcript variants utilizing alternative polyadenylation signals exist for this gene.

Immunogen information

Gene ID:

1511

Uniprot

P08311

Synonyms:

CTSG; CATG; CG

Antibody Information

Recommended dilutions:

WB 1:500 - 1:2000 IHC 1:50
- 1:100

Source:

Rabbit

Isotype:

IgG

Purification:

Affinity purification

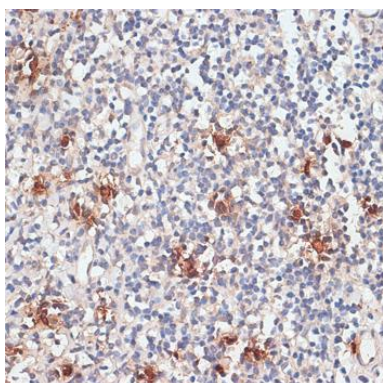
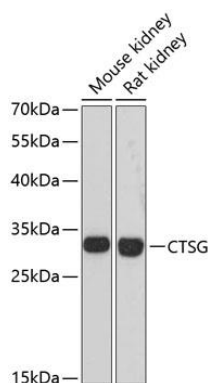
Immunogen:

Recombinant fusion protein containing a sequence corresponding to amino acids 75-190 of human CTSG (NP_001902.1).

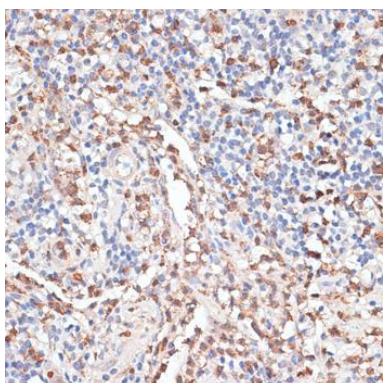
Storage:

Store at -20°C. Avoid freeze / thaw cycles. Buffer: PBS with 0.02% sodium azide, 50% glycerol, pH7.3.

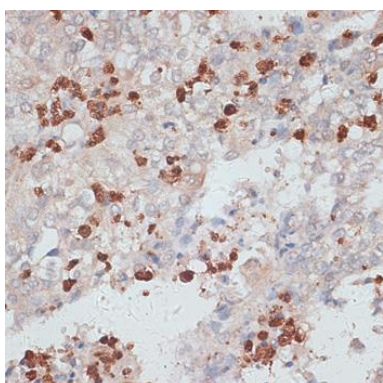
Product Images



Immunohistochemistry of paraffin-embedded human tonsil using CTSG antibody (CAB13172) at dilution of 1:100 (40x lens).



Immunohistochemistry of paraffin-embedded human appendix using CTSG antibody (CAB13172) at dilution of 1:100 (40x lens).



Immunohistochemistry of paraffin-embedded human uterine cancer using CTSG antibody (CAB13172) at dilution of 1:100 (40x lens).