

# DGCR14 Rabbit Polyclonal Antibody



CAB13174

---

## Product Information

**Size:**

20uL, 50uL, 100uL, 200uL

**Observed MW:**

53kDa

**Calculated MW:**

52kDa

**Applications:**

WB

**Reactivity:**

Human, Mouse

## Antibody Information

**Recommended dilutions:**

WB 1:500 - 1:2000

**Source:**

Rabbit

**Isotype:**

IgG

**Purification:**

Affinity purification

## Protein Background

This gene is located within the minimal DGS critical region (MDGCR) thought to contain the gene(s) responsible for a group of developmental disorders. These disorders include DiGeorge syndrome, velocardiofacial syndrome, conotruncal anomaly face syndrome, and some familial or sporadic conotruncal cardiac defects which have been associated with microdeletion of 22q11.2. The encoded protein may be a component of C complex spliceosomes, and the orthologous protein in the mouse localizes to the nucleus. Alternatively spliced transcript variants have been found for this gene.

## Immunogen information

**Gene ID:**

8220

**Uniprot**

Q96DF8

**Synonyms:**

DGCR14; DGCR13; DGS-H; DGS-I; DGSH; DGSI; ES2; ESS-2; Es2el; bis1

**Immunogen:**

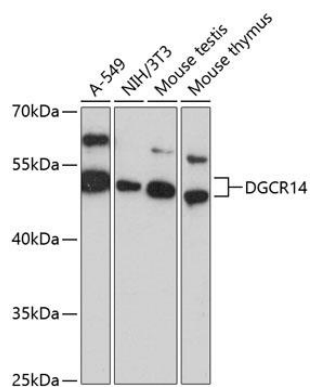
Recombinant fusion protein containing a sequence corresponding to amino acids 1-300 of human DGCR14 (NP\_073210.1).

**Storage:**

Store at -20°C. Avoid freeze / thaw cycles. Buffer: PBS with 0.02% sodium azide, 50% glycerol, pH7.3.

## Product Images

---



Western blot analysis of extracts of various cell lines, using DGCR14 antibody (CAB13174) at 1:3000 dilution. Secondary antibody: HRP Goat Anti-Rabbit IgG (H+L) (CABS014) at 1:10000 dilution. Lysates/proteins: 25ug per lane. Blocking buffer: 3% nonfat dry milk in TBST. Detection: ECL Basic Kit (CABM00020). Exposure time: 5s.