

# DHH Rabbit Polyclonal Antibody



CAB13177

---

## Product Information

**Size:**

20uL, 50uL, 100uL, 200uL

**Observed MW:**

44kDa

**Calculated MW:**

43kDa

**Applications:**

WB

**Reactivity:**

Human, Mouse, Rat

## Antibody Information

**Recommended dilutions:**

WB 1:500 - 1:2000

**Source:**

Rabbit

**Isotype:**

IgG

**Purification:**

Affinity purification

## Protein Background

This gene encodes a member of the hedgehog family. The hedgehog gene family encodes signaling molecules that play an important role in regulating morphogenesis. This protein is predicted to be made as a precursor that is autocatalytically cleaved; the N-terminal portion is soluble and contains the signalling activity while the C-terminal portion is involved in precursor processing. More importantly, the C-terminal product covalently attaches a cholesterol moiety to the N-terminal product, restricting the N-terminal product to the cell surface and preventing it from freely diffusing throughout the organism. Defects in this protein have been associated with partial gonadal dysgenesis (PGD) accompanied by minifascicular polyneuropathy. This protein may be involved in both male gonadal differentiation and perineurial development.

## Immunogen information

**Gene ID:**

50846

**Uniprot**

O43323

**Synonyms:**

DHH; GDXYM; HHG-3; SRXY7

**Immunogen:**

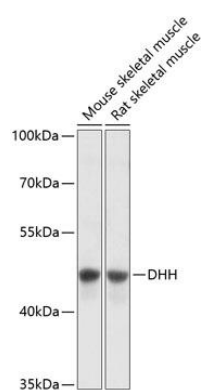
Recombinant fusion protein containing a sequence corresponding to amino acids 199-396 of human DHH (NP\_066382.1).

**Storage:**

Store at -20°C. Avoid freeze / thaw cycles. Buffer: PBS with 0.02% sodium azide, 50% glycerol, pH7.3.

## Product Images

---



Western blot analysis of extracts of various cell lines, using DHH antibody (CAB13177) at 1:3000 dilution. Secondary antibody: HRP Goat Anti-Rabbit IgG (H+L) (CABS014) at 1:10000 dilution. Lysates/proteins: 25ug per lane. Blocking buffer: 3% nonfat dry milk in TBST. Detection: ECL Basic Kit (CABM00020). Exposure time: 1s.