

CADPS Rabbit Polyclonal Antibody



CAB13186

Product Information

Size:

20uL, 50uL, 100uL, 200uL

Observed MW:

153kDa

Calculated MW:

50kDa/144kDa/148kDa/152kDa/153kDa

Applications:

WB

Reactivity:

Mouse, Rat

Protein Background

This gene encodes a novel neural/endocrine-specific cytosolic and peripheral membrane protein required for the Ca²⁺-regulated exocytosis of secretory vesicles. The protein acts at a stage in exocytosis that follows ATP-dependent priming, which involves the essential synthesis of phosphatidylinositol 4, 5-bisphosphate (PtdIns(4, 5)P₂). Alternative splicing has been observed at this locus and three variants, encoding distinct isoforms, are described.

Immunogen information

Gene ID:

8618

Uniprot

Q9ULU8

Synonyms:

CADPS; CADPS1; CAPS; CAPS1; UNC-31

Antibody Information

Recommended dilutions:

WB 1:1000 - 1:2000

Source:

Rabbit

Isotype:

IgG

Purification:

Affinity purification

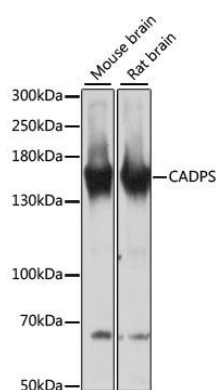
Immunogen:

Recombinant fusion protein containing a sequence corresponding to amino acids 1020-1100 of human CADPS (NP_899630.1).

Storage:

Store at -20°C. Avoid freeze / thaw cycles. Buffer: PBS with 0.02% sodium azide, 50% glycerol, pH7.3.

Product Images



Western blot analysis of extracts of various cell lines, using CADPS antibody (CAB13186) at 1:3000 dilution. Secondary antibody: HRP Goat Anti-Rabbit IgG (H+L) (CABS014) at 1:10000 dilution. Lysates/proteins: 25ug per lane. Blocking buffer: 3% nonfat dry milk in TBST. Detection: ECL Basic Kit (CABM00020). Exposure time: 30s.