

FAM208A Rabbit Polyclonal Antibody



CAB13187

Product Information

Size:

20uL, 50uL, 100uL, 200uL

Observed MW:

189kDa

Calculated MW:

139kDa/170kDa/182kDa/189kDa

Applications:

WB

Reactivity:

Human

Antibody Information

Recommended dilutions:

WB 1:500 - 1:2000

Source:

Rabbit

Isotype:

IgG

Purification:

Affinity purification

Protein Background

Immunogen information

Gene ID:

23272

Uniprot

Q9UK61

Synonyms:

FAM208A; C3orf63; RAP140; TASOR; se89-1

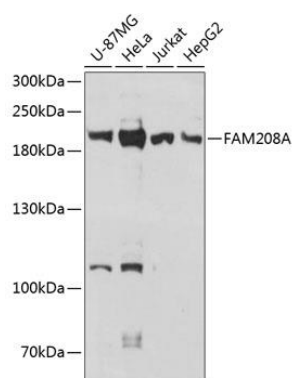
Immunogen:

Recombinant fusion protein containing a sequence corresponding to amino acids 700-1000 of human FAM208A (NP_001106207.1).

Storage:

Store at -20°C. Avoid freeze / thaw cycles. Buffer: PBS with 0.02% sodium azide, 50% glycerol, pH7.3.

Product Images



Western blot analysis of extracts of various cell lines, using FAM208A antibody (CAB13187) at 1:3000 dilution. Secondary antibody: HRP Goat Anti-Rabbit IgG (H+L) (CABS014) at 1:10000 dilution. Lysates/proteins: 25ug per lane. Blocking buffer: 3% nonfat dry milk in TBST. Detection: ECL Basic Kit (CABM00020). Exposure time: 30s.