

# MRPL45 Rabbit Polyclonal Antibody



CAB13197

## Product Information

### Size:

20uL, 50uL, 100uL, 200uL

### Observed MW:

35kDa

### Calculated MW:

35kDa

### Applications:

WB IHC IF

### Reactivity:

Human, Mouse, Rat

## Antibody Information

### Recommended dilutions:

WB 1:500 - 1:2000 IHC 1:50  
- 1:200 IF 1:50 - 1:200

### Source:

Rabbit

### Isotype:

IgG

### Purification:

Affinity purification

## Protein Background

Mammalian mitochondrial ribosomal proteins are encoded by nuclear genes and help in protein synthesis within the mitochondrion. Mitochondrial ribosomes (mitoribosomes) consist of a small 28S subunit and a large 39S subunit. They have an estimated 75% protein to rRNA composition compared to prokaryotic ribosomes, where this ratio is reversed. Another difference between mammalian mitoribosomes and prokaryotic ribosomes is that the latter contain a 5S rRNA. Among different species, the proteins comprising the mitoribosome differ greatly in sequence, and sometimes in biochemical properties, which prevents easy recognition by sequence homology. This gene encodes a 39S subunit protein. Alternative splicing results in multiple transcript variants. Pseudogenes corresponding to this gene are found on chromosomes 2p and 17q.

## Immunogen information

### Gene ID:

84311

### Uniprot

Q9BRJ2

### Synonyms:

MRPL45; L45mt; MRP-L45

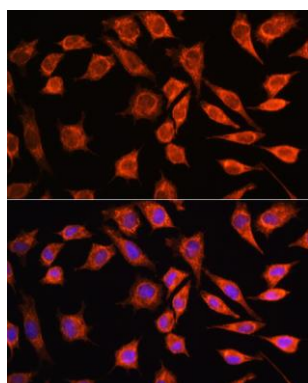
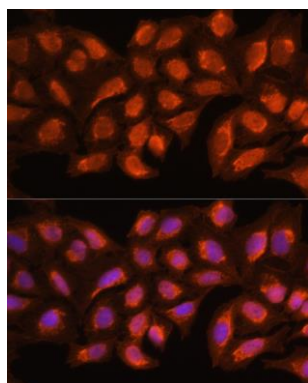
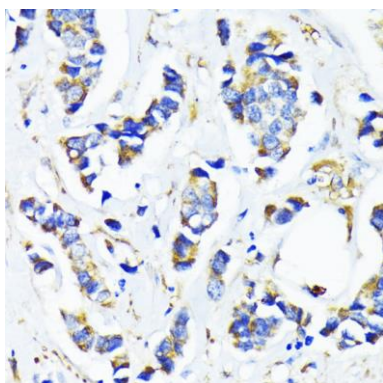
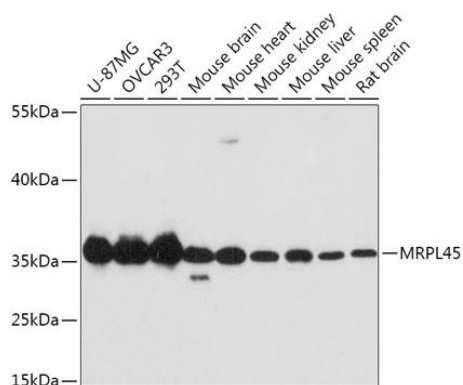
### Immunogen:

Recombinant fusion protein containing a sequence corresponding to amino acids 57-306 of human MRPL45 (NP\_115727.5).

### Storage:

Store at -20°C. Avoid freeze / thaw cycles. Buffer: PBS with 0.02% sodium azide, 50% glycerol, pH7.3.

## Product Images



Western blot analysis of extracts of various cell lines, using MRPL45 antibody (CAB13197) at 1:1000 dilution. Secondary antibody: HRP Goat Anti-Rabbit IgG (H+L) (CABS014) at 1:10000 dilution. Lysates/proteins: 25ug per lane. Blocking buffer: 3% nonfat dry milk in TBST. Detection: ECL Basic Kit (CABM00020). Exposure time: 90s.

Immunohistochemistry of paraffin-embedded human breast cancer using MRPL45 antibody (CAB13197) at dilution of 1:100 (40x lens).

Immunofluorescence analysis of HeLa cells using MRPL45 Rabbit pAb (CAB13197) at dilution of 100 (40x lens). Blue: DAPI for nuclear staining.

Immunofluorescence analysis of L929 cells using MRPL45 Rabbit pAb (CAB13197) at dilution of 100 (40x lens). Blue: DAPI for nuclear staining.