

# SLC14A2 Rabbit Polyclonal Antibody



CAB13208

---

## Product Information

### Size:

20uL, 50uL, 100uL, 200uL

### Observed MW:

101kDa

### Calculated MW:

43kDa/101kDa

### Applications:

WB

### Reactivity:

Human, Mouse

## Protein Background

The protein encoded by this gene belongs to the urea transporter family. In mammalian cells, urea is the chief end product of nitrogen catabolism, and plays an important role in the urinary concentration mechanism. This protein is expressed in the inner medulla of the kidney, and mediates rapid transepithelial urea transport across the inner medullary collecting duct. Alternatively spliced transcript variants have been found for this gene.

## Immunogen information

### Gene ID:

8170

### Uniprot

Q15849

### Synonyms:

SLC14A2; HUT2; UT-A2; UT2; UTA; UTR; hUT-A6

## Antibody Information

### Recommended dilutions:

WB 1:500 - 1:2000

### Source:

Rabbit

### Isotype:

IgG

### Purification:

Affinity purification

### Immunogen:

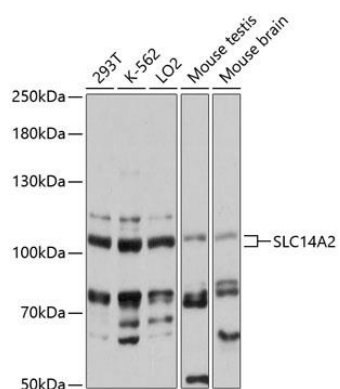
Recombinant fusion protein containing a sequence corresponding to amino acids 420-580 of human SLC14A2 (NP\_009094.3).

### Storage:

Store at -20°C. Avoid freeze / thaw cycles. Buffer: PBS with 0.02% sodium azide, 50% glycerol, pH7.3.

## Product Images

---



Western blot analysis of extracts of various cell lines, using SLC14A2 antibody (CAB13208) at 1:3000 dilution. Secondary antibody: HRP Goat Anti-Rabbit IgG (H+L) (CABS014) at 1:10000 dilution. Lysates/proteins: 25ug per lane. Blocking buffer: 3% nonfat dry milk in TBST. Detection: ECL Basic Kit (CABM00020). Exposure time: 60s.