

PID1 Rabbit Polyclonal Antibody



CAB13220

Product Information

Size:

20uL, 50uL, 100uL, 200uL

Observed MW:

27kDa

Calculated MW:

19kDa/24kDa/28kDa

Applications:

WB IP

Reactivity:

Human, Mouse, Rat

Antibody Information

Recommended dilutions:

WB 1:500 - 1:2000 IP 1:50 - 1:200

Source:

Rabbit

Isotype:

IgG

Purification:

Affinity purification

Protein Background

Immunogen information

Gene ID:

55022

Uniprot

Q7Z2X4

Synonyms:

PID1; HMFN2073; NYGGF4; P-CLI1; PCLI1

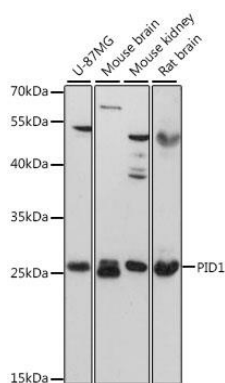
Immunogen:

Recombinant fusion protein containing a sequence corresponding to amino acids 124-248 of human PID1 (NP_060403.3).

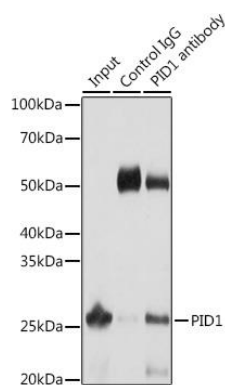
Storage:

Store at -20°C. Avoid freeze / thaw cycles. Buffer: PBS with 0.02% sodium azide, 50% glycerol, pH7.3.

Product Images



Western blot analysis of extracts of various cell lines, using PID1 antibody (CAB13220) at 1:3000 dilution. Secondary antibody: HRP Goat Anti-Rabbit IgG (H+L) (CABS014) at 1:10000 dilution. Lysates/proteins: 25ug per lane. Blocking buffer: 3% nonfat dry milk in TBST. Detection: ECL Enhanced Kit (CABM00021). Exposure time: 30s.



Immunoprecipitation analysis of 25ug extracts of Mouse liver cells using 3ug PID1 antibody (CAB13220). Western blot was performed from the immunoprecipitate using PID1 antibody (CAB13220) at a dilution of 1:1000.