

FKBP14 Rabbit Polyclonal Antibody



CAB13221

Product Information

Size:

20uL, 50uL, 100uL, 200uL

Observed MW:

22kDa

Calculated MW:

24kDa

Applications:

WB

Reactivity:

Human, Mouse, Rat

Protein Background

The protein encoded by this gene is a member of the FK506-binding protein family of peptidyl-prolyl cis-trans isomerases. The encoded protein is found in the lumen of the endoplasmic reticulum, where it is thought to accelerate protein folding. Defects in this gene are a cause of a type of Ehlers-Danlos syndrome (EDS). Both a protein-coding variant and noncoding variants are transcribed from this gene.

Immunogen information

Gene ID:

55033

Uniprot

Q9NWM8

Synonyms:

FKBP14; EDSKMH; FKBP22; IPBP12

Antibody Information

Recommended dilutions:

WB 1:500 - 1:2000

Source:

Rabbit

Isotype:

IgG

Purification:

Affinity purification

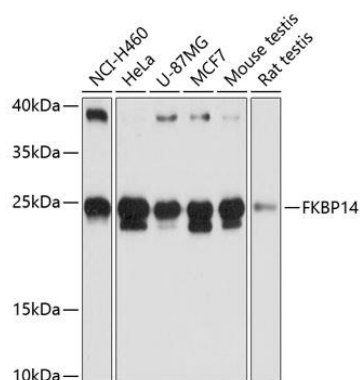
Immunogen:

Recombinant fusion protein containing a sequence corresponding to amino acids 20-211 of human FKBP14 (NP_060416.1).

Storage:

Store at -20°C. Avoid freeze / thaw cycles. Buffer: PBS with 0.02% sodium azide, 50% glycerol, pH7.3.

Product Images



Western blot analysis of extracts of various cell lines, using FKBP14 antibody (CAB13221) at 1:3000 dilution. Secondary antibody: HRP Goat Anti-Rabbit IgG (H+L) (CABS014) at 1:10000 dilution. Lysates/proteins: 25ug per lane. Blocking buffer: 3% nonfat dry milk in TBST. Detection: ECL Basic Kit (CABM00020). Exposure time: 10s.