

LARP1B Rabbit Polyclonal Antibody



CAB13222

Product Information

Size:

20uL, 50uL, 100uL, 200uL

Observed MW:

105kDa

Calculated MW:

14kDa/24-38kDa/90-105kDa

Applications:

WB IHC

Reactivity:

Human, Mouse, Rat

Antibody Information

Recommended dilutions:

WB 1:500 - 1:2000 IHC 1:50 - 1:200

Source:

Rabbit

Isotype:

IgG

Purification:

Affinity purification

Protein Background

This gene encodes a protein containing domains found in the La related protein of Drosophila melanogaster. La motif-containing proteins are thought to be RNA-binding proteins, where the La motif and adjacent amino acids fold into an RNA recognition motif. The La motif is also found in proteins unrelated to the La protein. Alternative splicing has been observed at this locus and multiple variants, encoding distinct isoforms, are described. Additional splice variation has been identified but the full-length nature of these transcripts has not been determined.

Immunogen information

Gene ID:

55132

Uniprot

Q659C4

Synonyms:

LARP1B; LARP2

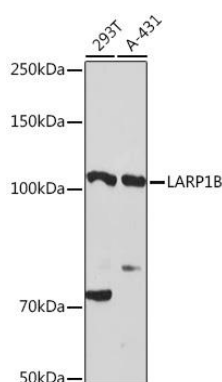
Immunogen:

Recombinant fusion protein containing a sequence corresponding to amino acids 170-320 of human LARP1B (NP_060548.2).

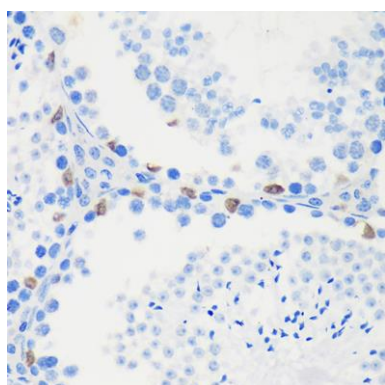
Storage:

Store at -20°C. Avoid freeze / thaw cycles. Buffer: PBS with 0.02% sodium azide, 50% glycerol, pH7.3.

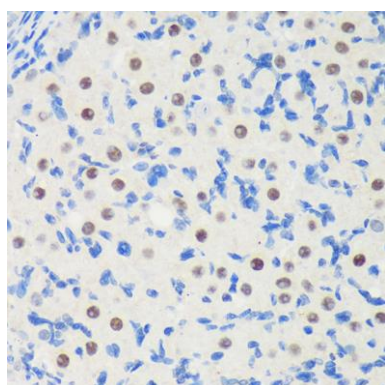
Product Images



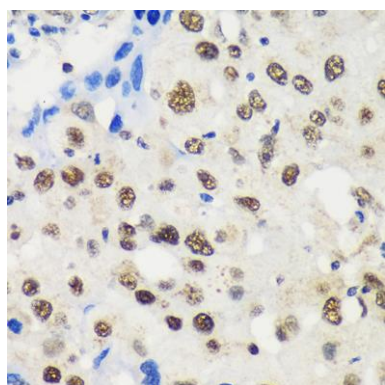
Western blot analysis of extracts of various cell lines, using LARP1B Rabbit pAb (CAB13222) at 1:3000 dilution. Secondary antibody: HRP Goat Anti-Rabbit IgG (H+L) (CABS014) at 1:10000 dilution. Lysates/proteins: 25ug per lane. Blocking buffer: 3% nonfat dry milk in TBST. Detection: ECL Basic Kit (CABM00020). Exposure time: 180s.



Immunohistochemistry of paraffin-embedded Mouse testis using LARP1B Rabbit pAb (CAB13222) at dilution of 1:100 (40x lens).



Immunohistochemistry of paraffin-embedded Rat ovary using LARP1B Rabbit pAb (CAB13222) at dilution of 1:100 (40x lens).



Immunohistochemistry of paraffin-embedded Human breast cancer using LARP1B Rabbit pAb (CAB13222) at dilution of 1:100 (40x lens).