

RPS19BP1 Rabbit Polyclonal Antibody



CAB13231

Product Information

Size:

20uL, 50uL, 100uL, 200uL

Observed MW:

20kDa

Calculated MW:

15kDa

Applications:

WB IF

Reactivity:

Human, Mouse, Rat

Antibody Information

Recommended dilutions:

WB 1:500 - 1:2000 IF 1:50 - 1:200

Source:

Rabbit

Isotype:

IgG

Purification:

Affinity purification

Protein Background

Immunogen information

Gene ID:

91582

Uniprot

Q86WX3

Synonyms:

RPS19BP1; AROS; S19BP

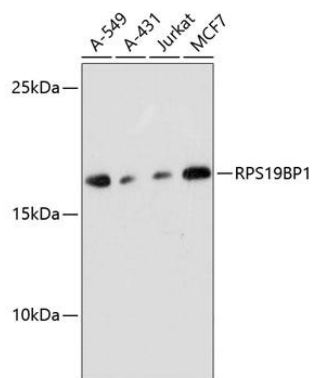
Immunogen:

Recombinant fusion protein containing a sequence corresponding to amino acids 1-136 of human RPS19BP1 (NP_919307.1).

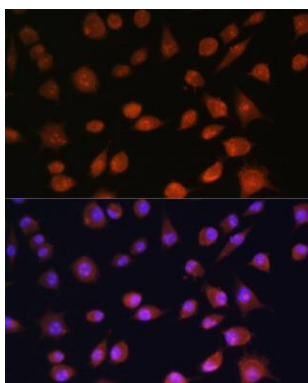
Storage:

Store at -20°C. Avoid freeze / thaw cycles. Buffer: PBS with 0.02% sodium azide, 50% glycerol, pH7.3.

Product Images



Western blot analysis of extracts of various cell lines, using RPS19BP1 antibody (CAB13231) at 1:3000 dilution. Secondary antibody: HRP Goat Anti-Rabbit IgG (H+L) (CABS014) at 1:10000 dilution. Lysates/proteins: 25ug per lane. Blocking buffer: 3% nonfat dry milk in TBST. Detection: ECL Basic Kit (CABM00020). Exposure time: 30s.



Immunofluorescence analysis of L929 cells using RPS19BP1 antibody (CAB13231) at dilution of 1:100. Blue: DAPI for nuclear staining.