

CXCL12 Rabbit Polyclonal Antibody



CAB1325

Product Information

Size:

20uL, 50uL, 100uL, 200uL

Observed MW:

18kDa

Calculated MW:

10kDa/11kDa/13kDa/15kDa

Applications:

IHC IF

Reactivity:

Human, Mouse, Rat

Protein Background

This antimicrobial gene encodes a stromal cell-derived alpha chemokine member of the intercrine family. The encoded protein functions as the ligand for the G-protein coupled receptor, chemokine (C-X-C motif) receptor 4, and plays a role in many diverse cellular functions, including embryogenesis, immune surveillance, inflammation response, tissue homeostasis, and tumor growth and metastasis. Mutations in this gene are associated with resistance to human immunodeficiency virus type 1 infections. Multiple transcript variants encoding different isoforms have been found for this gene.

Immunogen information

Gene ID:

6387

Uniprot

P48061

Synonyms:

CXCL12; IRH; PBSF; SCYB12; SDF1; TLSF; TPAR1

Antibody Information

Recommended dilutions:

IHC 1:100 - 1:200 IF 1:100 - 1:200

Source:

Rabbit

Isotype:

IgG

Purification:

Affinity purification

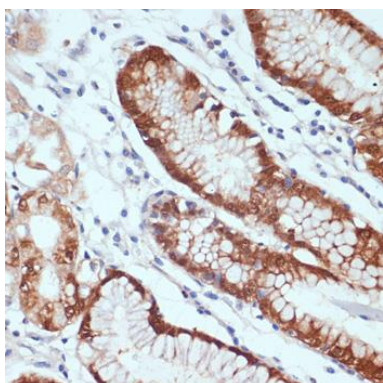
Immunogen:

Recombinant fusion protein containing a sequence corresponding to amino acids 22-89 of human CXCL12 (NP_954637.1).

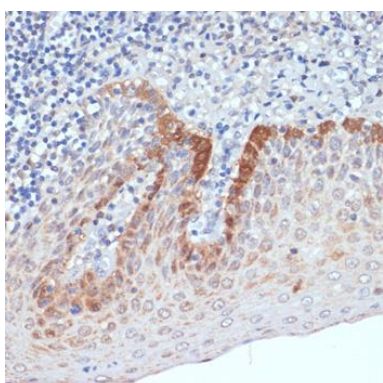
Storage:

Store at -20°C. Avoid freeze / thaw cycles. Buffer: PBS with 0.02% sodium azide, 50% glycerol, pH7.3.

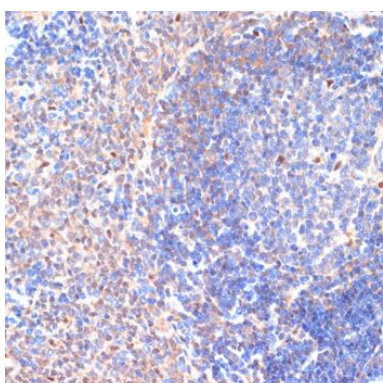
Product Images



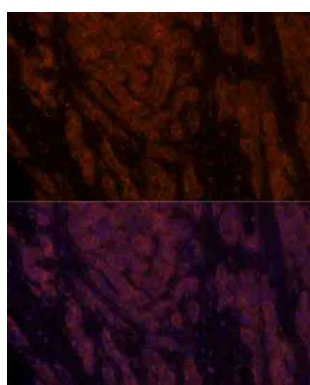
Immunohistochemistry of paraffin-embedded human stomach using CXCL12 antibody (CAB1325) at dilution of 1:100 (40x lens).



Immunohistochemistry of paraffin-embedded human tonsil using CXCL12 antibody (CAB1325) at dilution of 1:100 (40x lens).



Immunohistochemistry of paraffin-embedded rat spleen using CXCL12 antibody (CAB1325) at dilution of 1:100 (40x lens).



Immunofluorescence analysis of human liver cancer using CXCL12 antibody (CAB1325) at dilution of 1:100. Blue: DAPI for nuclear staining.