

# KAT5 Rabbit Polyclonal Antibody



CAB13259

## Product Information

### Size:

20uL, 50uL, 100uL, 200uL

### Observed MW:

56kDa

### Calculated MW:

53kDa/56kDa/58kDa/61kDa

### Applications:

WB IF

### Reactivity:

Human

## Antibody Information

### Recommended dilutions:

WB 1:500 - 1:2000 IF 1:20 - 1:50

### Source:

Rabbit

### Isotype:

IgG

### Purification:

Affinity purification

## Protein Background

The protein encoded by this gene belongs to the MYST family of histone acetyl transferases (HATs) and was originally isolated as an HIV-1 TAT-interactive protein. HATs play important roles in regulating chromatin remodeling, transcription and other nuclear processes by acetylating histone and nonhistone proteins. This protein is a histone acetylase that has a role in DNA repair and apoptosis and is thought to play an important role in signal transduction. Alternative splicing of this gene results in multiple transcript variants.

## Immunogen information

### Gene ID:

10524

### Uniprot

Q92993

### Synonyms:

KAT5; ESA1; HTATIP; HTATIP1; PLIP; TIP; TIP60; ZC2HC5; cPLA2

### Immunogen:

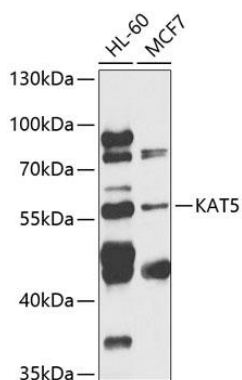
Recombinant fusion protein containing a sequence corresponding to amino acids 260-513 of human KAT5 (NP\_006379.2).

### Storage:

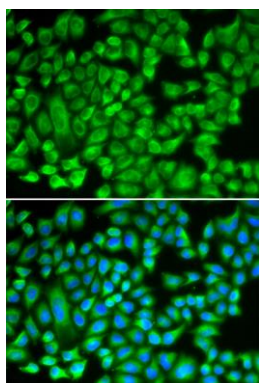
Store at -20°C. Avoid freeze / thaw cycles. Buffer: PBS with 0.02% sodium azide, 50% glycerol, pH7.3.

## Product Images

---



Western blot analysis of extracts of various cell lines, using KAT5 antibody (CAB13259) at 1:1000 dilution. Secondary antibody: HRP Goat Anti-Rabbit IgG (H+L) (CABS014) at 1:10000 dilution. Lysates/proteins: 25ug per lane. Blocking buffer: 3% nonfat dry milk in TBST. Detection: ECL Basic Kit (CABM00020). Exposure time: 10s.



Immunofluorescence analysis of A549 cells using KAT5 antibody (CAB13259). Blue: DAPI for nuclear staining.