

HHLA2 Rabbit Polyclonal Antibody



CAB13262

Product Information

Size:

20uL, 50uL, 100uL, 200uL

Observed MW:

Refer to figures

Calculated MW:

39kDa/46kDa

Applications:

WB IHC

Reactivity:

Human

Protein Background

This gene encodes a protein ligand found on the surface of monocytes. The encoded protein is thought to regulate cell-mediated immunity by binding to a receptor on T lymphocytes and inhibiting the proliferation of these cells. Alternate splicing results in multiple transcript variants.

Immunogen information

Gene ID:

11148

Uniprot

Q9UM44

Synonyms:

HHLA2; B7-H5; B7-H7; B7H7; B7y

Antibody Information

Recommended dilutions:

WB 1:500 - 1:2000 IHC 1:50
- 1:200

Source:

Rabbit

Isotype:

IgG

Purification:

Affinity purification

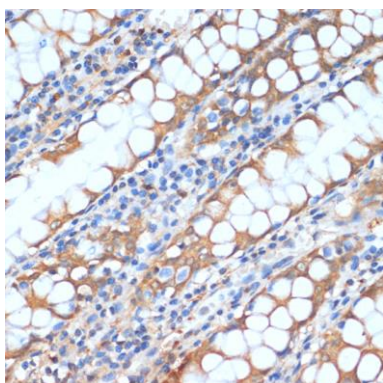
Immunogen:

Recombinant fusion protein containing a sequence corresponding to amino acids 30-200 of human HHLA2 (NP_009003.1).

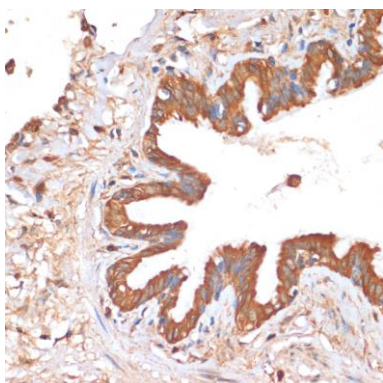
Storage:

Store at -20°C. Avoid freeze / thaw cycles. Buffer: PBS with 0.02% sodium azide, 50% glycerol, pH7.3.

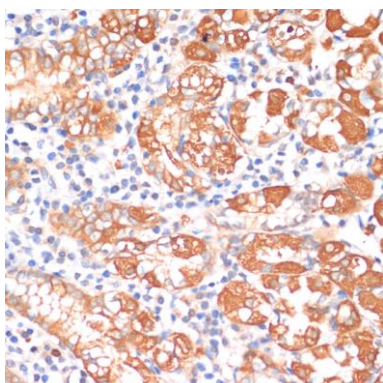
Product Images



Immunohistochemistry of paraffin-embedded human colon using HHLA2 antibody (CAB13262) at dilution of 1:100 (40x lens).



Immunohistochemistry of paraffin-embedded human lung using HHLA2 antibody (CAB13262) at dilution of 1:100 (40x lens).



Immunohistochemistry of paraffin-embedded human stomach using HHLA2 antibody (CAB13262) at dilution of 1:100 (40x lens).