

ACAT1 Rabbit Polyclonal Antibody



CAB13273

Product Information

Size:

20uL, 50uL, 100uL, 200uL

Observed MW:

42kDa

Calculated MW:

42kDa

Applications:

WB IHC IF

Reactivity:

Human, Mouse, Rat

Protein Background

This gene encodes a mitochondrially localized enzyme that catalyzes the reversible formation of acetoacetyl-CoA from two molecules of acetyl-CoA. Defects in this gene are associated with 3-ketothiolase deficiency, an inborn error of isoleucine catabolism characterized by urinary excretion of 2-methyl-3-hydroxybutyric acid, 2-methylacetoacetic acid, tiglylglycine, and butanone.

Immunogen information

Gene ID:

38

Uniprot

P24752

Synonyms:

ACAT1; ACAT; MAT; T2; THIL

Antibody Information

Recommended dilutions:

WB 1:500 - 1:2000 IHC 1:50
- 1:200 IF 1:50 - 1:200

Source:

Rabbit

Isotype:

IgG

Purification:

Affinity purification

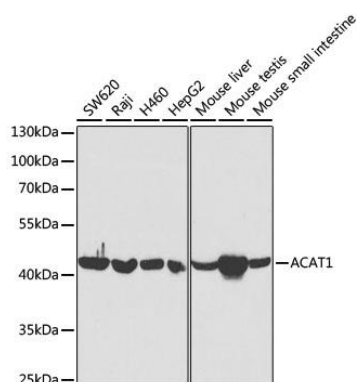
Immunogen:

Recombinant fusion protein containing a sequence corresponding to amino acids 1-145 of human ACAT1 (NP_000010.1).

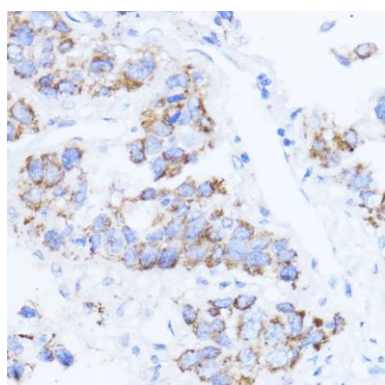
Storage:

Store at -20°C. Avoid freeze / thaw cycles. Buffer: PBS with 0.02% sodium azide, 50% glycerol, pH7.3.

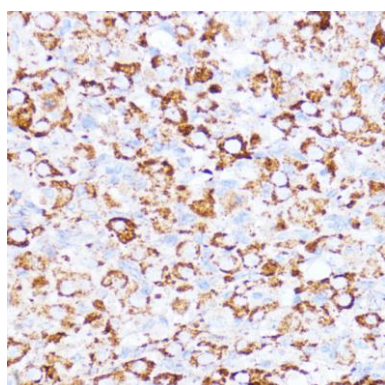
Product Images



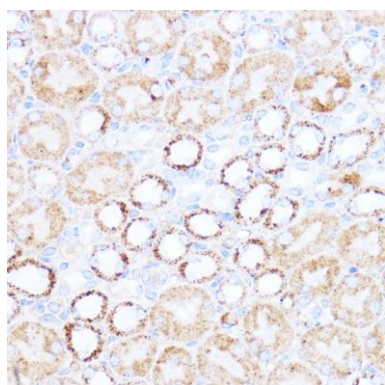
Western blot analysis of extracts of various cell lines, using ACAT1 antibody (CAB13273) at 1:5000 dilution. Secondary antibody: HRP Goat Anti-Rabbit IgG (H+L) (CABS014) at 1:10000 dilution. Lysates/proteins: 25ug per lane. Blocking buffer: 3% nonfat dry milk in TBST. Detection: ECL Basic Kit (CABM00020). Exposure time: 10s.



Immunohistochemistry of paraffin-embedded human liver cancer using ACAT1 antibody (CAB13273) at dilution of 1:100 (40x lens).



Immunohistochemistry of paraffin-embedded rat ovary using ACAT1 antibody (CAB13273) at dilution of 1:100 (40x lens).



Immunohistochemistry of paraffin-embedded mouse kidney using ACAT1 antibody (CAB13273) at dilution of 1:100 (40x lens).