

# Bak Rabbit Polyclonal Antibody



CAB13281

## Product Information

### Size:

20uL, 50uL, 100uL, 200uL

### Observed MW:

26kDa

### Calculated MW:

16kDa/23kDa

### Applications:

WB IHC IF

### Reactivity:

Human, Mouse, Rat

## Protein Background

The protein encoded by this gene belongs to the BCL2 protein family. BCL2 family members form oligomers or heterodimers and act as anti- or pro-apoptotic regulators that are involved in a wide variety of cellular activities. This protein localizes to mitochondria, and functions to induce apoptosis. It interacts with and accelerates the opening of the mitochondrial voltage-dependent anion channel, which leads to a loss in membrane potential and the release of cytochrome c. This protein also interacts with the tumor suppressor P53 after exposure to cell stress.

## Immunogen information

### Gene ID:

578

### Uniprot

Q16611

### Synonyms:

BAK1; BAK; BAK-LIKE; BCL2L7

## Antibody Information

### Recommended dilutions:

WB 1:500 - 1:2000 IHC 1:50  
- 1:100 IF 1:50 - 1:100

### Source:

Rabbit

### Isotype:

IgG

### Purification:

Affinity purification

### Immunogen:

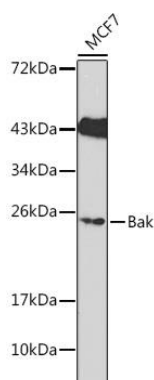
A synthetic peptide corresponding to a sequence within amino acids 62-112 of human Bak (NP\_001179.1).

### Storage:

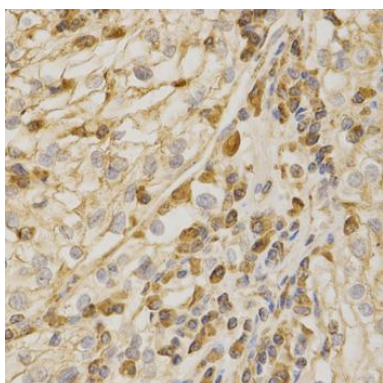
Store at -20°C. Avoid freeze / thaw cycles. Buffer: PBS with 0.02% sodium azide, 50% glycerol, pH7.3.

## Product Images

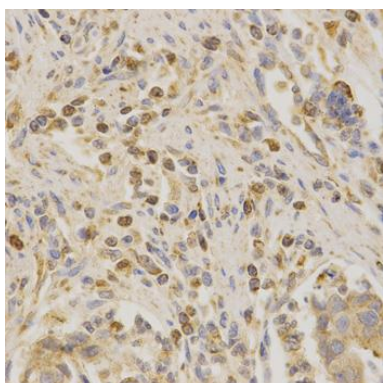
---



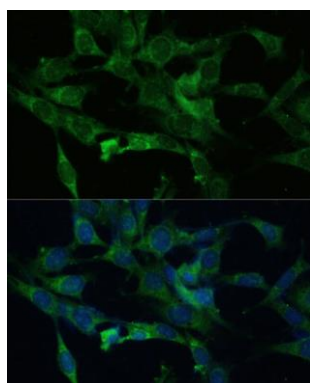
Western blot analysis of extracts of MCF7 cells, using Bak Antibody (CAB13281). Secondary antibody: HRP Goat Anti-Rabbit IgG (H+L) (CABS014) at 1:10000 dilution. Lysates/proteins: 25ug per lane. Blocking buffer: 3% nonfat dry milk in TBST.



Immunohistochemistry of paraffin-embedded human kidney cancer using Bak antibody (CAB13281) at dilution of 1:200 (40x lens).



Immunohistochemistry of paraffin-embedded human stomach cancer using Bak antibody (CAB13281) at dilution of 1:200 (40x lens).



Immunofluorescence analysis of NIH-3T3 cells using Bak Polyclonal Antibody (CAB13281) at dilution of 1:100 (40x lens). Blue: DAPI for nuclear staining.