

# CHRNA1 Rabbit Polyclonal Antibody



CAB13287

## Product Information

### Size:

20uL, 50uL, 100uL, 200uL

### Observed MW:

### Calculated MW:

51kDa/54kDa

### Applications:

IF

### Reactivity:

Human

## Antibody Information

### Recommended dilutions:

IF 1:50 - 1:200

### Source:

Rabbit

### Isotype:

IgG

### Purification:

Affinity purification

## Protein Background

The muscle acetylcholine receptor consists of 5 subunits of 4 different types: 2 alpha subunits and 1 each of the beta, gamma, and delta subunits. This gene encodes an alpha subunit that plays a role in acetylcholine binding/channel gating. Alternatively spliced transcript variants encoding different isoforms have been identified.

## Immunogen information

### Gene ID:

1134

### Uniprot

P02708

### Synonyms:

CHRNA1; ACHRA; ACHRD; CHRNA; CMS1A; CMS1B; CMS2A; FCCMS; SCCMS

### Immunogen:

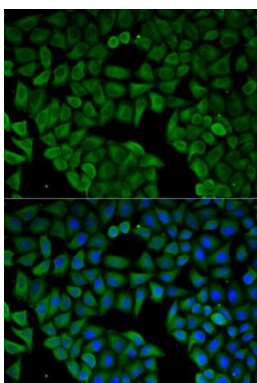
Recombinant fusion protein containing a sequence corresponding to amino acids 105-220 of human CHRNA1 (NP\_000070.1).

### Storage:

Store at -20°C. Avoid freeze / thaw cycles. Buffer: PBS with 0.02% sodium azide, 50% glycerol, pH7.3.

## Product Images

---



Immunofluorescence analysis of HeLa cells using CHRNA1 antibody (CAB13287). Blue: DAPI for nuclear staining.