

# DSP Rabbit Polyclonal Antibody



CAB13299

## Product Information

### Size:

20uL, 50uL, 100uL, 200uL

### Observed MW:

315kDa

### Calculated MW:

260kDa/278kDa/331kDa

### Applications:

WB IHC

### Reactivity:

Human, Mouse

## Protein Background

This gene encodes a protein that anchors intermediate filaments to desmosomal plaques and forms an obligate component of functional desmosomes. Mutations in this gene are the cause of several cardiomyopathies and keratodermas, including skin fragility-woolly hair syndrome. Alternative splicing results in multiple transcript variants.

## Immunogen information

### Gene ID:

1832

### Uniprot

P15924

### Synonyms:

DCWHKTA; DP; DSP

## Antibody Information

### Recommended dilutions:

WB 1:500 - 1:2000 IHC 1:50  
- 1:200

### Source:

Rabbit

### Isotype:

IgG

### Purification:

Affinity purification

### Immunogen:

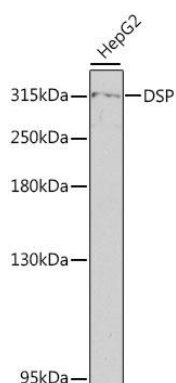
A synthetic peptide corresponding to a sequence within amino acids 2750-2850 of human DSP (NP\_004406.2).

### Storage:

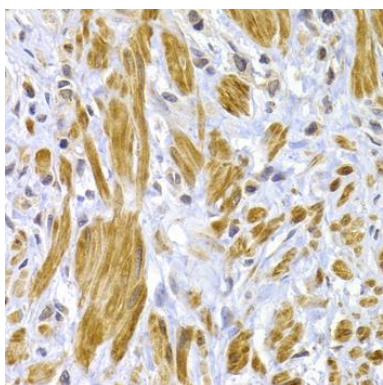
Store at -20°C. Avoid freeze / thaw cycles. Buffer: PBS with 0.02% sodium azide, 50% glycerol, pH7.3.

## Product Images

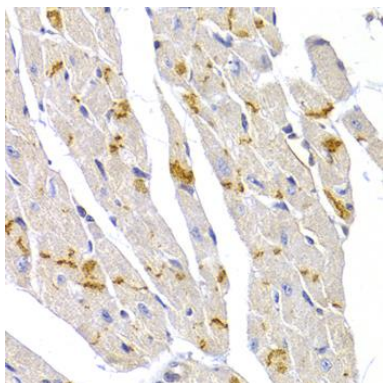
---



Western blot analysis of extracts of HepG2 cells, using DSP antibody (CAB13299) at 1:800 dilution. Secondary antibody: HRP Goat Anti-Rabbit IgG (H+L) (CABS014) at 1:10000 dilution. Lysates/proteins: 25ug per lane. Blocking buffer: 3% nonfat dry milk in TBST. Detection: ECL Enhanced Kit (CABM00021). Exposure time: 60s.



Immunohistochemistry of paraffin-embedded human gastric cancer using DSP antibody (CAB13299) at dilution of 1:100 (40x lens).



Immunohistochemistry of paraffin-embedded mouse heart using DSP antibody (CAB13299) at dilution of 1:100 (40x lens).