

EPHA1 Rabbit Polyclonal Antibody



CAB13301

Product Information

Size:

20uL, 50uL, 100uL, 200uL

Observed MW:

140kDa

Calculated MW:

51kDa/52kDa/108kDa

Applications:

WB IF

Reactivity:

Human, Mouse

Antibody Information

Recommended dilutions:

WB 1:500 - 1:2000 IF 1:50 - 1:200

Source:

Rabbit

Isotype:

IgG

Purification:

Affinity purification

Protein Background

This gene belongs to the ephrin receptor subfamily of the protein-tyrosine kinase family. EPH and EPH-related receptors have been implicated in mediating developmental events, particularly in the nervous system. Receptors in the EPH subfamily typically have a single kinase domain and an extracellular region containing a Cys-rich domain and 2 fibronectin type III repeats. The ephrin receptors are divided into 2 groups based on the similarity of their extracellular domain sequences and their affinities for binding ephrin-A and ephrin-B ligands. This gene is expressed in some human cancer cell lines and has been implicated in carcinogenesis.

Immunogen information

Gene ID:

2041

Uniprot

P21709

Synonyms:

EPHA1; EPH; EPHT; EPHT1

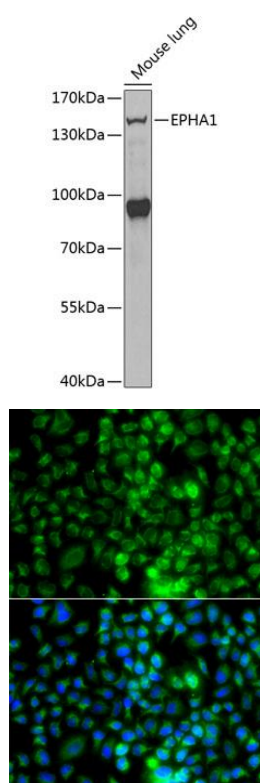
Immunogen:

Recombinant fusion protein containing a sequence corresponding to amino acids 1-230 of human EPHA1 (NP_005223.4).

Storage:

Store at -20°C. Avoid freeze / thaw cycles. Buffer: PBS with 0.02% sodium azide, 50% glycerol, pH7.3.

Product Images



Western blot analysis of extracts of mouse lung, using EPHA1 antibody (CAB13301) at 1:1000 dilution. Secondary antibody: HRP Goat Anti-Rabbit IgG (H+L) (CABS014) at 1:10000 dilution. Lysates/proteins: 25ug per lane. Blocking buffer: 3% nonfat dry milk in TBST. Detection: ECL Basic Kit (CABM00020). Exposure time: 90s.

Immunofluorescence analysis of A549 cells using EPHA1 antibody (CAB13301). Blue: DAPI for nuclear staining.