

ETS1 Rabbit Polyclonal Antibody



CAB13302

Product Information

Size:

20uL, 50uL, 100uL, 200uL

Observed MW:

55kDa

Calculated MW:

25kDa/30kDa/40kDa/50kDa/
55kDa

Applications:

WB IF IP

Reactivity:

Human, Mouse

Protein Background

This gene encodes a member of the ETS family of transcription factors, which are defined by the presence of a conserved ETS DNA-binding domain that recognizes the core consensus DNA sequence GGAA/T in target genes. These proteins function either as transcriptional activators or repressors of numerous genes, and are involved in stem cell development, cell senescence and death, and tumorigenesis. Alternatively spliced transcript variants encoding different isoforms have been described for this gene.

Immunogen information

Gene ID:

2113

Uniprot

P14921

Synonyms:

ETS-1; EWSR2; c-ets-1; p54; ETS1

Antibody Information

Recommended dilutions:

WB 1:500 - 1:2000 IF 1:50 -
1:200 IP 1:50 - 1:200

Source:

Rabbit

Isotype:

IgG

Purification:

Affinity purification

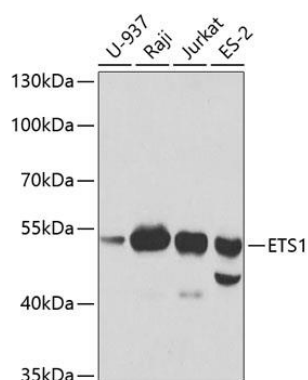
Immunogen:

Recombinant fusion protein containing a sequence corresponding to amino acids 1-260 of human ETS1 (NP_005229.1).

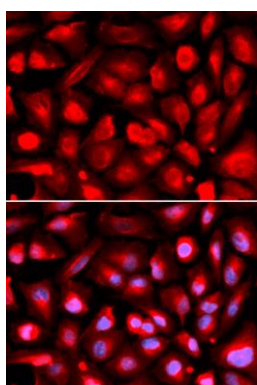
Storage:

Store at -20°C. Avoid freeze / thaw cycles. Buffer: PBS with 0.02% sodium azide, 50% glycerol, pH7.3.

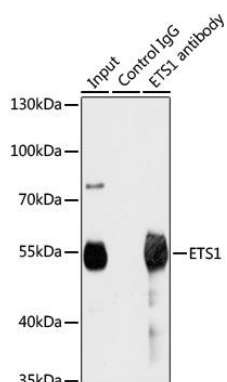
Product Images



Western blot analysis of extracts of various cell lines, using ETS1 antibody (CAB13302) at 1:1000 dilution. Secondary antibody: HRP Goat Anti-Rabbit IgG (H+L) (CABS014) at 1:10000 dilution. Lysates/proteins: 25ug per lane. Blocking buffer: 3% nonfat dry milk in TBST.



Immunofluorescence analysis of U2OS cells using ETS1 antibody (CAB13302). Blue: DAPI for nuclear staining.



Immunoprecipitation analysis of 200ug extracts of Jurkat cells using 1ug ETS1 antibody (CAB13302). Western blot was performed from the immunoprecipitate using ETS1 antibody (CAB13302) at a dilution of 1:1000.