

ETV1 Rabbit Polyclonal Antibody



CAB13303

Product Information

Size:

20uL, 50uL, 100uL, 200uL

Observed MW:

Calculated MW:

43kDa/48kDa/50kDa/52kDa/
53kDa/55kDa

Applications:

IHC IF

Reactivity:

Human, Mouse, Rat

Antibody Information

Recommended dilutions:

IHC 1:50 - 1:200 IF 1:50 -
1:200

Source:

Rabbit

Isotype:

IgG

Purification:

Affinity purification

Protein Background

This gene encodes a member of the ETS (E twenty-six) family of transcription factors. The ETS proteins regulate many target genes that modulate biological processes like cell growth, angiogenesis, migration, proliferation and differentiation. All ETS proteins contain an ETS DNA-binding domain that binds to DNA sequences containing the consensus 5'-CGGA[AT]-3'. The protein encoded by this gene contains a conserved short acidic transactivation domain (TAD) in the N-terminal region, in addition to the ETS DNA-binding domain in the C-terminal region. This gene is involved in chromosomal translocations, which result in multiple fusion proteins including EWS-ETV1 in Ewing sarcoma and at least 10 ETV1 partners (see PMID: 19657377, Table 1) in prostate cancer. In addition to chromosomal rearrangement, this gene is overexpressed in prostate cancer, melanoma and gastrointestinal stromal tumor. Multiple alternatively spliced transcript variants encoding different isoforms have been identified.

Immunogen information

Gene ID:

2115

Uniprot

P50549

Synonyms:

ETV1; ER81

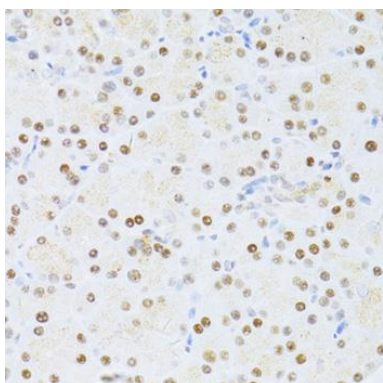
Immunogen:

Recombinant fusion protein containing a sequence corresponding to amino acids 80-300 of human ETV1 (NP_004947.2).

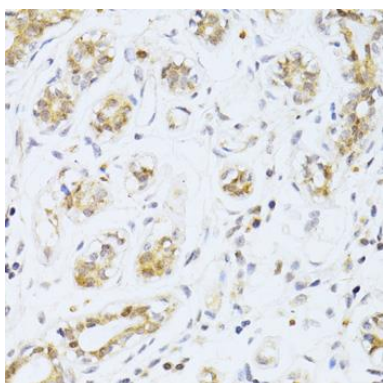
Storage:

Store at -20°C. Avoid freeze / thaw cycles. Buffer: PBS with 0.02% sodium azide, 50% glycerol, pH7.3.

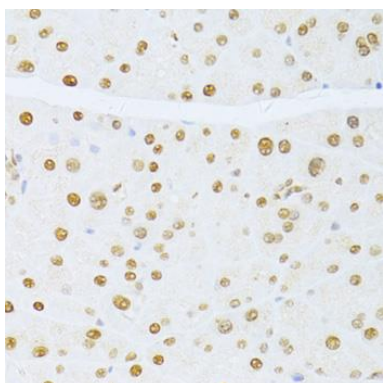
Product Images



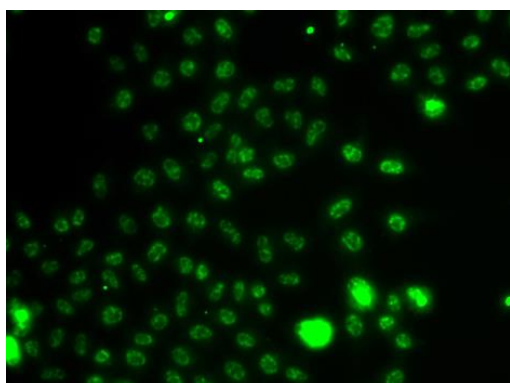
Immunohistochemistry of paraffin-embedded rat pancreas using ETV1 antibody (CAB13303) at dilution of 1:100 (40x lens).



Immunohistochemistry of paraffin-embedded human breast cancer using ETV1 antibody (CAB13303) at dilution of 1:100 (40x lens).



Immunohistochemistry of paraffin-embedded mouse pancreas using ETV1 antibody (CAB13303) at dilution of 1:100 (40x lens).



Immunofluorescence analysis of A549 cells using ETV1 antibody (CAB13303).