

CD168 Rabbit Polyclonal Antibody



CAB13315

Product Information

Size:

20uL, 50uL, 100uL, 200uL

Observed MW:

84-130kDa

Calculated MW:

88kDa/91kDa

Applications:

WB IHC

Reactivity:

Human, Mouse, Rat

Protein Background

The protein encoded by this gene is involved in cell motility. It is expressed in breast tissue and together with other proteins, it forms a complex with BRCA1 and BRCA2, thus is potentially associated with higher risk of breast cancer. Alternatively spliced transcript variants encoding different isoforms have been noted for this gene.

Immunogen information

Gene ID:

15366

Uniprot

Synonyms:

HMMR; CD168; IHABP; RHAMM

Antibody Information

Recommended dilutions:

WB 1:500 - 1:2000 IHC 1:50
- 1:200

Source:

Rabbit

Isotype:

IgG

Purification:

Affinity purification

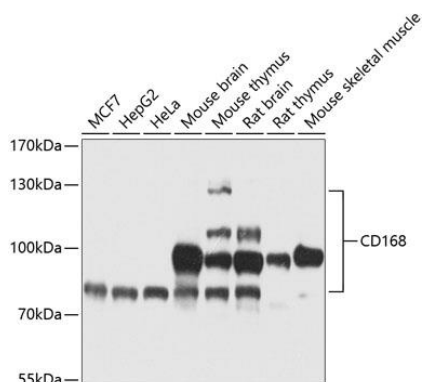
Immunogen:

Recombinant protein of mouse CD168

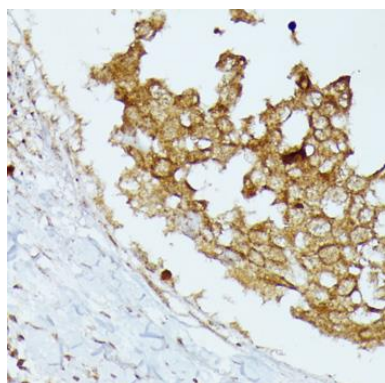
Storage:

Store at -20°C. Avoid freeze / thaw cycles. Buffer: PBS with 0.02% sodium azide, 50% glycerol, pH7.3.

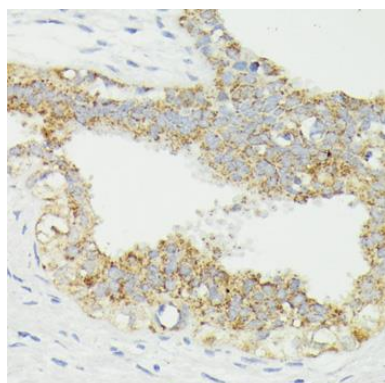
Product Images



Western blot analysis of extracts of various cell lines, using CD168 antibody (CAB13315) at 1:1000 dilution. Secondary antibody: HRP Goat Anti-Rabbit IgG (H+L) (CABS014) at 1:10000 dilution. Lysates/proteins: 25ug per lane. Blocking buffer: 3% nonfat dry milk in TBST. Detection: ECL Basic Kit (CABM00020). Exposure time: 20s.



Immunohistochemistry of paraffin-embedded human breast cancer using CD168 antibody (CAB13315) at dilution of 1:100 (40x lens).



Immunohistochemistry of paraffin-embedded human breast using CD168 antibody (CAB13315) at dilution of 1:100 (40x lens).