

IL12RB1 Rabbit Polyclonal Antibody



CAB13319

Product Information

Size:

20uL, 50uL, 100uL, 200uL

Observed MW:

Calculated MW:

42kDa/72kDa/73kDa

Applications:

IHC IF

Reactivity:

Human, Rat

Antibody Information

Recommended dilutions:

IHC 1:50 - 1:200 IF 1:50 - 1:200

Source:

Rabbit

Isotype:

IgG

Purification:

Affinity purification

Protein Background

The protein encoded by this gene is a type I transmembrane protein that belongs to the hemopoietin receptor superfamily. This protein binds to interleukine 12 (IL12) with a low affinity, and is thought to be a part of IL12 receptor complex. This protein forms a disulfide-linked oligomer, which is required for its IL12 binding activity. The coexpression of this and IL12RB2 proteins was shown to lead to the formation of high-affinity IL12 binding sites and reconstitution of IL12 dependent signaling. Mutations in this gene impair the development of interleukin-17-producing T lymphocytes and result in increased susceptibility to mycobacterial and Salmonella infections. Alternative splicing results in multiple transcript variants.

Immunogen information

Gene ID:

3594

Uniprot

P42701

Synonyms:

IL12RB1; CD212; IL-12R-BETA1; IL12RB; IMD30

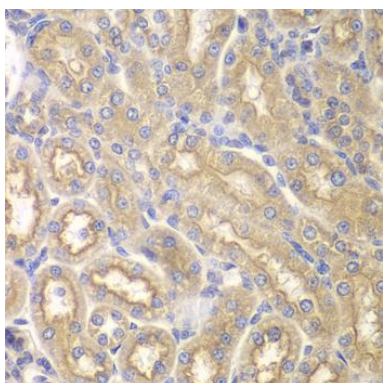
Immunogen:

Recombinant fusion protein containing a sequence corresponding to amino acids 25-305 of human IL12RB1 (NP_714912.1).

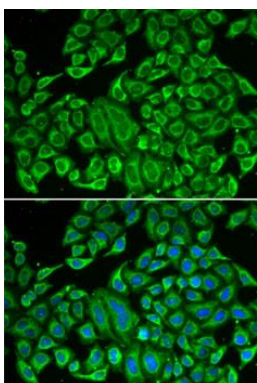
Storage:

Store at -20°C. Avoid freeze / thaw cycles. Buffer: PBS with 0.02% sodium azide, 50% glycerol, pH7.3.

Product Images



Immunohistochemistry of paraffin-embedded rat kidney using IL12RB1 antibody (CAB13319) at dilution of 1:200 (40x lens).



Immunofluorescence analysis of MCF7 cells using IL12RB1 antibody (CAB13319). Blue: DAPI for nuclear staining.