

MB Rabbit Polyclonal Antibody



CAB13326

Product Information

Size:

20uL, 50uL, 100uL, 200uL

Observed MW:

15kDa

Calculated MW:

17kDa

Applications:

WB IF

Reactivity:

Human, Mouse

Protein Background

This gene encodes a member of the globin superfamily and is expressed in skeletal and cardiac muscles. The encoded protein is a haemoprotein contributing to intracellular oxygen storage and transcellular facilitated diffusion of oxygen. At least three alternatively spliced transcript variants encoding the same protein have been reported.

Immunogen information

Gene ID:

4151

Uniprot

P02144

Synonyms:

MB; PVALB; myoglobin; myoglobin

Antibody Information

Recommended dilutions:

WB 1:500 - 1:2000 IF 1:50 - 1:200

Source:

Rabbit

Isotype:

IgG

Purification:

Affinity purification

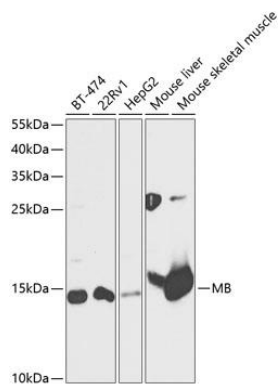
Immunogen:

Recombinant fusion protein containing a sequence corresponding to amino acids 1-154 of human MB (NP_005359.1).

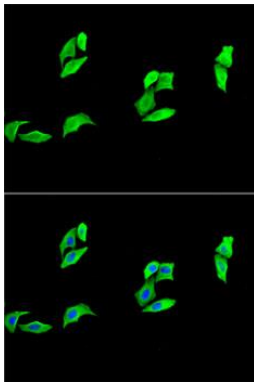
Storage:

Store at -20°C. Avoid freeze / thaw cycles. Buffer: PBS with 0.02% sodium azide, 50% glycerol, pH7.3.

Product Images



Western blot analysis of extracts of various cell lines, using MB antibody (CAB13326) at 1:1000 dilution. Secondary antibody: HRP Goat Anti-Rabbit IgG (H+L) (CABS014) at 1:10000 dilution. Lysates/proteins: 25ug per lane. Blocking buffer: 3% nonfat dry milk in TBST. Detection: ECL Basic Kit (CABM00020). Exposure time: 5s.



Immunofluorescence analysis of A-549 cells using MB antibody (CAB13326). Blue: DAPI for nuclear staining.