

# [KO Validated] NUDT1 Rabbit Polyclonal Antibody

## CAB13330



### Product Information

**Size:**

20uL, 50uL, 100uL, 200uL

**Observed MW:**

18kDa

**Calculated MW:**

17kDa/19kDa/20kDa/22kDa

**Applications:**

WB IHC IP

**Reactivity:**

Human

### Antibody Information

**Recommended dilutions:**

WB 1:500 - 1:2000 IHC 1:50  
- 1:200 IP 1:20 - 1:50

**Source:**

Rabbit

**Isotype:**

IgG

**Purification:**

Affinity purification

### Protein Background

Misincorporation of oxidized nucleoside triphosphates into DNA/RNA during replication and transcription can cause mutations that may result in carcinogenesis or neurodegeneration. The protein encoded by this gene is an enzyme that hydrolyzes oxidized purine nucleoside triphosphates, such as 8-oxo-dGTP, 8-oxo-dATP, 2-hydroxy-dATP, and 2-hydroxy rATP, to monophosphates, thereby preventing misincorporation. The encoded protein is localized mainly in the cytoplasm, with some in the mitochondria, suggesting that it is involved in the sanitization of nucleotide pools both for nuclear and mitochondrial genomes. Several alternatively spliced transcript variants, some of which encode distinct isoforms, have been identified. Additional variants have been observed, but their full-length natures have not been determined. A single-nucleotide polymorphism that results in the production of an additional, longer isoform (p26) has been described.

### Immunogen information

**Gene ID:**

4521

**Uniprot**

P36639

**Synonyms:**

NUDT1; MTH1

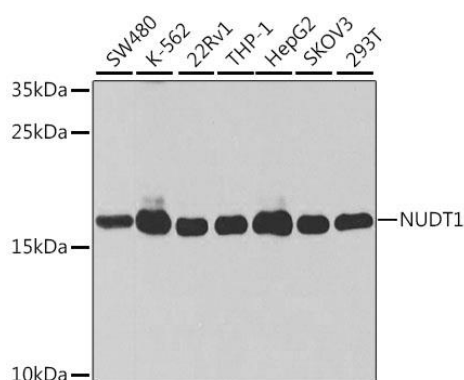
**Immunogen:**

Recombinant fusion protein containing a sequence corresponding to amino acids 1-179 of human NUDT1 (NP\_945192.1).

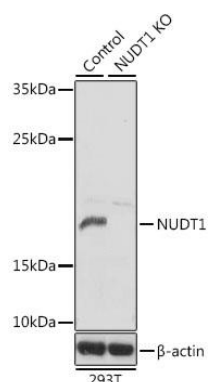
**Storage:**

Store at -20°C. Avoid freeze / thaw cycles. Buffer: PBS with 0.02% sodium azide, 50% glycerol, pH7.3.

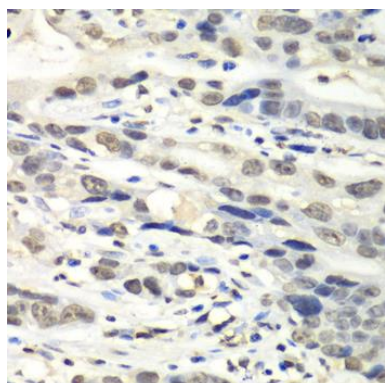
## Product Images



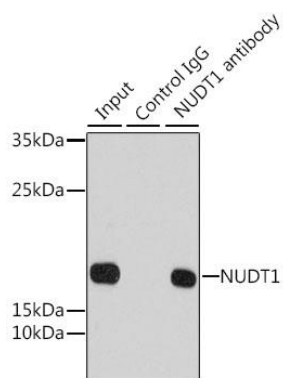
Western blot analysis of extracts of various cell lines, using NUDT1 antibody (CAB13330) at 1:1000 dilution. Secondary antibody: HRP Goat Anti-Rabbit IgG (H+L) (CABS014) at 1:10000 dilution. Lysates/proteins: 25ug per lane. Blocking buffer: 3% nonfat dry milk in TBST. Detection: ECL Basic Kit (CABM00020). Exposure time: 10s.



Western blot analysis of extracts from normal (control) and NUDT1 knockout (KO) 293T cells, using NUDT1 antibody (CAB13330) at 1:1000 dilution. Secondary antibody: HRP Goat Anti-Rabbit IgG (H+L) (CABS014) at 1:10000 dilution. Lysates/proteins: 25ug per lane. Blocking buffer: 3% nonfat dry milk in TBST. Detection: ECL Basic Kit (CABM00020). Exposure time: 10s.



Immunohistochemistry of paraffin-embedded human gastric cancer using NUDT1 antibody (CAB13330) at dilution of 1:100 (40x lens).



Immunoprecipitation analysis of 200ug extracts of 293T cells using 1ug NUDT1 antibody (CAB13330). Western blot was performed from the immunoprecipitate using NUDT1 antibody (CAB13330) at a dilution of 1:1000.