

NDUFV1 Rabbit Polyclonal Antibody



CAB13333

Product Information

Size:

20uL, 50uL, 100uL, 200uL

Observed MW:

51kDa

Calculated MW:

49kDa/50kDa

Applications:

WB IHC IF

Reactivity:

Mouse, Rat

Antibody Information

Recommended dilutions:

WB 1:500 - 1:2000 IHC 1:50
- 1:200 IF 1:50 - 1:200

Source:

Rabbit

Isotype:

IgG

Purification:

Affinity purification

Protein Background

The mitochondrial respiratory chain provides energy to cells via oxidative phosphorylation and consists of four membrane-bound electron-transporting protein complexes (I-IV) and an ATP synthase (complex V). This gene encodes a 51 kDa subunit of the NADH:ubiquinone oxidoreductase complex I; a large complex with at least 45 nuclear and mitochondrial encoded subunits that liberates electrons from NADH and channels them to ubiquinone. This subunit carries the NADH-binding site as well as flavin mononucleotide (FMN)- and Fe-S-binding sites. Defects in complex I are a common cause of mitochondrial dysfunction; a syndrome that occurs in approximately 1 in 10, 000 live births. Mitochondrial complex I deficiency is linked to myopathies, encephalomyopathies, and neurodegenerative disorders such as Parkinson's disease and Leigh syndrome. Alternative splicing results in multiple transcript variants encoding distinct isoforms.

Immunogen information

Gene ID:

4723

Uniprot

P49821

Synonyms:

NDUFV1; CI-51K; CI51KD; UQOR1

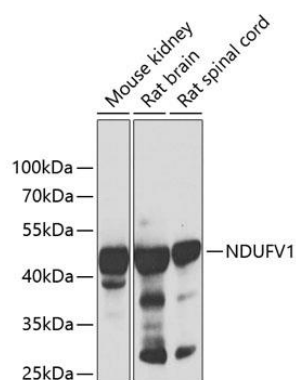
Immunogen:

Recombinant fusion protein containing a sequence corresponding to amino acids 1-250 of human NDUFV1 (NP_009034.2).

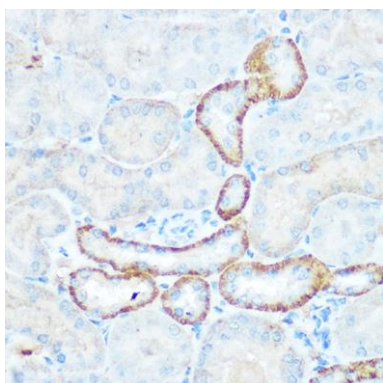
Storage:

Store at -20°C. Avoid freeze / thaw cycles. Buffer: PBS with 0.02% sodium azide, 50% glycerol, pH7.3.

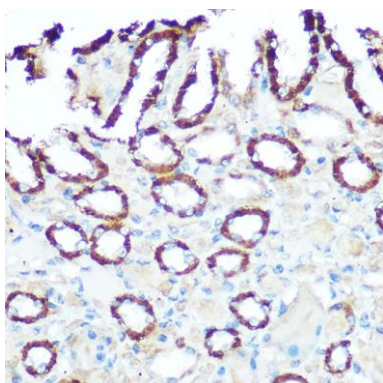
Product Images



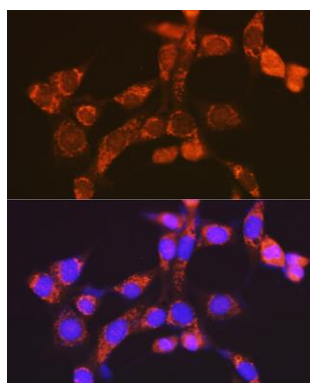
Western blot analysis of extracts of various cell lines, using NDUFV1 antibody (CAB13333) at 1:1000 dilution. Secondary antibody: HRP Goat Anti-Rabbit IgG (H+L) (CABS014) at 1:10000 dilution. Lysates/proteins: 25ug per lane. Blocking buffer: 3% nonfat dry milk in TBST. Detection: ECL Basic Kit (CABM00020). Exposure time: 90s.



Immunohistochemistry of paraffin-embedded mouse kidney using NDUFV1 Rabbit pAb (CAB13333) at dilution of 1:100 (40x lens).



Immunohistochemistry of paraffin-embedded rat kidney using NDUFV1 Rabbit pAb (CAB13333) at dilution of 1:100 (40x lens).



Immunofluorescence analysis of NIH-3T3 cells using NDUFV1 Rabbit pAb (CAB13333) at dilution of 1:100 (40x lens). Blue: DAPI for nuclear staining.