

PCNA Rabbit Polyclonal Antibody



CAB13336

Product Information

Size:

20uL, 50uL, 100uL, 200uL

Observed MW:

36kDa

Calculated MW:

28kDa

Applications:

WB, IHC

Reactivity:

Human, Mouse, Rat

Category:

Polyclonal Antibodies

Protein Background

The protein encoded by this gene is found in the nucleus and is a cofactor of DNA polymerase delta. The encoded protein acts as a homotrimer and helps increase the processivity of leading strand synthesis during DNA replication. In response to DNA damage, this protein is ubiquitinated and is involved in the RAD6-dependent DNA repair pathway. Two transcript variants encoding the same protein have been found for this gene. Pseudogenes of this gene have been described on chromosome 4 and on the X chromosome.

Immunogen information

Gene ID:

5111

Uniprot

P12004

Synonyms:

PCNA; ATLD2

Immunogen:

Recombinant fusion protein containing a sequence corresponding to amino acids 1-261 of human PCNA (NP_002583.1).

Storage:

Store at -20°C. Avoid freeze / thaw cycles.

Buffer: PBS with 0.02% sodium azide, 50% glycerol, pH7.3.

Antibody Information

Recommended dilutions:

WB 1:500 - 1:2000

IHC 1:50 - 1:100

Source:

Rabbit

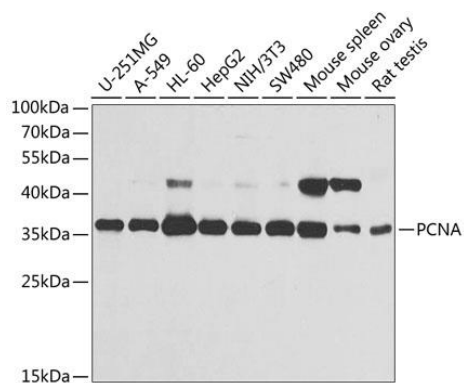
Isotype:

IgG

Purification:

Affinity purification

Product Images



Western blot analysis of extracts of various cell lines, using PCNA antibody (CAB13336) at 1:1000 dilution.

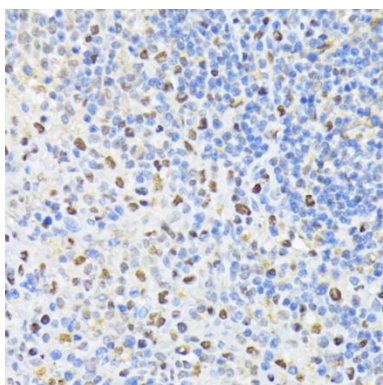
Secondary antibody: HRP Goat Anti-Rabbit IgG (H+L) (CABS014) at 1:10000 dilution.

Lysates/proteins: 25ug per lane.

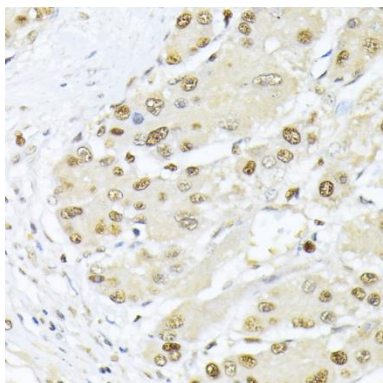
Blocking buffer: 3% non-fat dry milk in TBST.

Detection: ECL Basic Kit (AbGn00020).

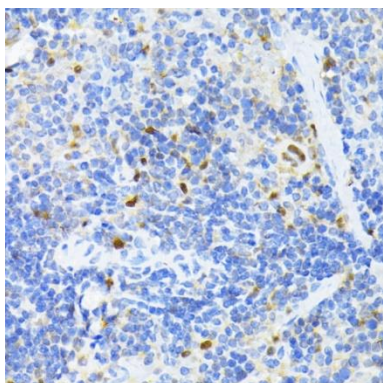
Exposure time: 10s.



Immunohistochemistry of paraffin-embedded rat spleen using PCNA antibody (CAB13336) at dilution of 1:100 (40x lens).



Immunohistochemistry of paraffin-embedded human liver cancer using PCNA antibody (CAB13336) at dilution of 1:100 (40x lens).



Immunohistochemistry of paraffin-embedded mouse spleen using PCNA antibody (CAB13336) at dilution of 1:100 (40x lens).