

PYCR1 Rabbit Polyclonal Antibody



CAB13346

Product Information

Size:

20uL, 50uL, 100uL, 200uL

Observed MW:

35kDa

Calculated MW:

33kDa/35kDa

Applications:

WB IHC IF

Reactivity:

Human, Mouse, Rat

Protein Background

This gene encodes an enzyme that catalyzes the NAD(P)H-dependent conversion of pyrroline-5-carboxylate to proline. This enzyme may also play a physiologic role in the generation of NADP(+) in some cell types. The protein forms a homopolymer and localizes to the mitochondrion. Alternative splicing results in multiple transcript variants.

Immunogen information

Gene ID:

5831

Uniprot

P32322

Synonyms:

PYCR1; ARCL2B; ARCL3B; P5C; P5CR; PIG45; PP222; PRO3; PYCR

Antibody Information

Recommended dilutions:

WB 1:500 - 1:2000 IHC 1:50
- 1:100 IF 1:50 - 1:100

Source:

Rabbit

Isotype:

IgG

Purification:

Affinity purification

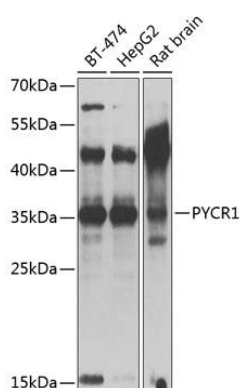
Immunogen:

Recombinant fusion protein containing a sequence corresponding to amino acids 1-319 of human PYCR1 (NP_008838.2).

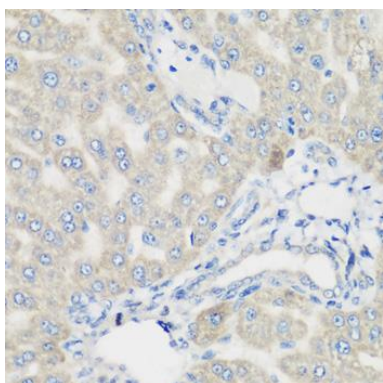
Storage:

Store at -20°C. Avoid freeze / thaw cycles. Buffer: PBS with 0.02% sodium azide, 50% glycerol, pH7.3.

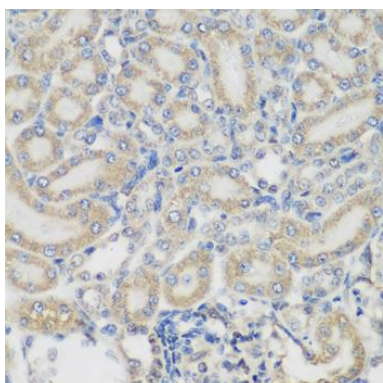
Product Images



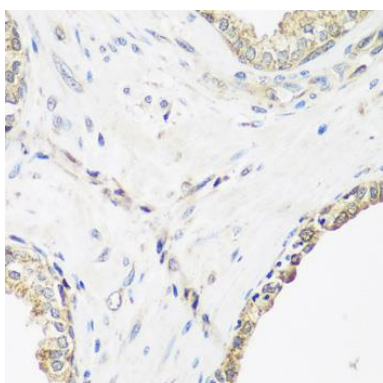
Western blot analysis of extracts of various cell lines, using PYCR1 antibody (CAB13346) at 1:1000 dilution. Secondary antibody: HRP Goat Anti-Rabbit IgG (H+L) (CABS014) at 1:10000 dilution. Lysates/proteins: 25ug per lane. Blocking buffer: 3% nonfat dry milk in TBST. Detection: ECL Basic Kit (CABM00020). Exposure time: 30s.



Immunohistochemistry of paraffin-embedded rat liver using PYCR1 antibody (CAB13346) at dilution of 1:200 (40x lens).



Immunohistochemistry of paraffin-embedded rat kidney using PYCR1 antibody (CAB13346) at dilution of 1:200 (40x lens).



Immunohistochemistry of paraffin-embedded human prostate using PYCR1 antibody (CAB13346) at dilution of 1:200 (40x lens).