

# RANGAP1 Rabbit Polyclonal Antibody



CAB13347

---

## Product Information

### Size:

20uL, 50uL, 100uL, 200uL

### Observed MW:

64/90kDa

### Calculated MW:

63kDa

### Applications:

WB IHC IF

### Reactivity:

Human

## Protein Background

This gene encodes a protein that associates with the nuclear pore complex and participates in the regulation of nuclear transport. The encoded protein interacts with Ras-related nuclear protein 1 (RAN) and regulates guanosine triphosphate (GTP)-binding and exchange. Alternative splicing results in multiple transcript variants.

## Immunogen information

### Gene ID:

5905

### Uniprot

P46060

### Synonyms:

RANGAP1; Fug1; RANGAP; SD

## Antibody Information

### Recommended dilutions:

WB 1:500 - 1:2000 IHC 1:50  
- 1:200 IF 1:50 - 1:200

### Source:

Rabbit

### Isotype:

IgG

### Purification:

Affinity purification

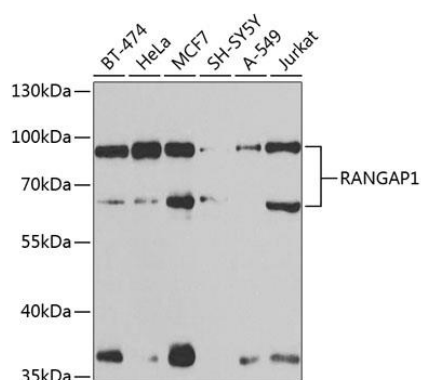
### Immunogen:

Recombinant fusion protein containing a sequence corresponding to amino acids 398-587 of human RANGAP1 (NP\_002874.1).

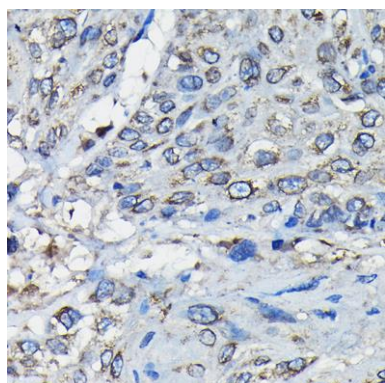
### Storage:

Store at -20°C. Avoid freeze / thaw cycles. Buffer: PBS with 0.02% sodium azide, 50% glycerol, pH7.3.

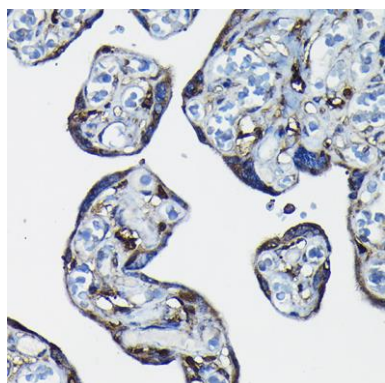
## Product Images



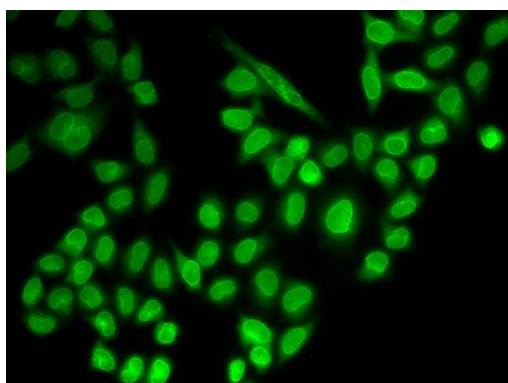
Western blot analysis of extracts of various cell lines, using RANGAP1 antibody (CAB13347) at 1:1000 dilution. Secondary antibody: HRP Goat Anti-Rabbit IgG (H+L) (CABS014) at 1:10000 dilution. Lysates/proteins: 25ug per lane. Blocking buffer: 3% nonfat dry milk in TBST. Detection: ECL Basic Kit (CABM00020). Exposure time: 90s.



Immunohistochemistry of paraffin-embedded human esophageal cancer using RANGAP1 Rabbit pAb (CAB13347) at dilution of 1:50 (40x lens).



Immunohistochemistry of paraffin-embedded human placenta using RANGAP1 Rabbit pAb (CAB13347) at dilution of 1:50 (40x lens).



Immunofluorescence analysis of MCF-7 cells using RANGAP1 antibody (CAB13347).