

# TAPBP Rabbit Polyclonal Antibody



CAB13357

## Product Information

### Size:

20uL, 50uL, 100uL, 200uL

### Observed MW:

48kDa

### Calculated MW:

38kDa/43kDa/47kDa/53kDa

### Applications:

WB IHC IF

### Reactivity:

Human, Mouse, Rat

## Antibody Information

### Recommended dilutions:

WB 1:500 - 1:2000 IHC 1:50  
- 1:200 IF 1:50 - 1:200

### Source:

Rabbit

### Isotype:

IgG

### Purification:

Affinity purification

## Protein Background

This gene encodes a transmembrane glycoprotein which mediates interaction between newly assembled major histocompatibility complex (MHC) class I molecules and the transporter associated with antigen processing (TAP), which is required for the transport of antigenic peptides across the endoplasmic reticulum membrane. This interaction is essential for optimal peptide loading on the MHC class I molecule. Up to four complexes of MHC class I and this protein may be bound to a single TAP molecule. This protein contains a C-terminal double-lysine motif (KKKAE) known to maintain membrane proteins in the endoplasmic reticulum. This gene lies within the major histocompatibility complex on chromosome 6. Alternative splicing results in three transcript variants encoding different isoforms.

## Immunogen information

### Gene ID:

6892

### Uniprot

O15533

### Synonyms:

TAPBP; NGS17; TAPA; TPN; TPSN; tapasin

### Immunogen:

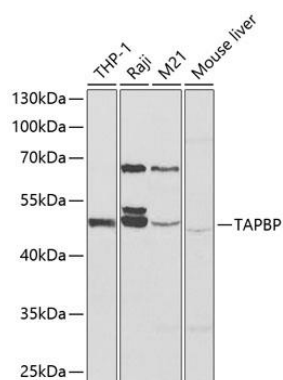
Recombinant fusion protein containing a sequence corresponding to amino acids 30-260 of human TAPBP (NP\_757345.2).

### Storage:

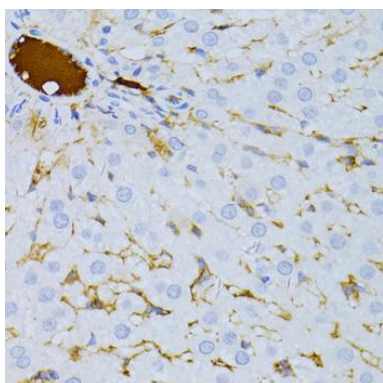
Store at -20°C. Avoid freeze / thaw cycles. Buffer: PBS with 0.02% sodium azide, 50% glycerol, pH7.3.

## Product Images

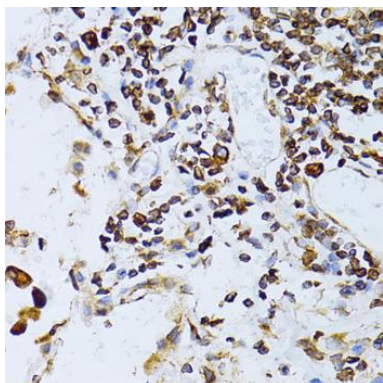
---



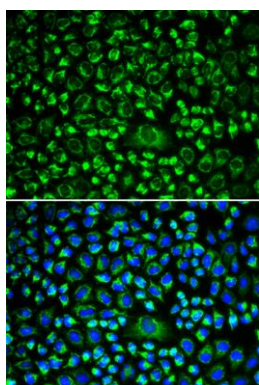
Western blot analysis of extracts of various cell lines, using TAPBP antibody (CAB13357) at 1:1000 dilution. Secondary antibody: HRP Goat Anti-Rabbit IgG (H+L) (CABS014) at 1:10000 dilution. Lysates/proteins: 25ug per lane. Blocking buffer: 3% nonfat dry milk in TBST.



Immunohistochemistry of paraffin-embedded rat liver using TAPBP antibody (CAB13357) at dilution of 1:100 (40x lens).



Immunohistochemistry of paraffin-embedded human lung cancer using TAPBP antibody (CAB13357) at dilution of 1:100 (40x lens).



Immunofluorescence analysis of HeLa cells using TAPBP antibody (CAB13357). Blue: DAPI for nuclear staining.