

# TCP1 Rabbit Polyclonal Antibody



CAB13364

## Product Information

### Size:

20uL, 50uL, 100uL, 200uL

### Observed MW:

60kDa

### Calculated MW:

60kDa

### Applications:

WB IHC IF

### Reactivity:

Human, Mouse, Rat

## Antibody Information

### Recommended dilutions:

WB 1:500 - 1:2000 IHC 1:50  
- 1:200 IF 1:50 - 1:200

### Source:

Rabbit

### Isotype:

IgG

### Purification:

Affinity purification

## Protein Background

The protein encoded by this gene is a molecular chaperone that is a member of the chaperonin containing TCP1 complex (CCT), also known as the TCP1 ring complex (TRiC). This complex consists of two identical stacked rings, each containing eight different proteins. Unfolded polypeptides enter the central cavity of the complex and are folded in an ATP-dependent manner. The complex folds various proteins, including actin and tubulin. Alternate transcriptional splice variants of this gene, encoding different isoforms, have been characterized. In addition, three pseudogenes that appear to be derived from this gene have been found.

## Immunogen information

### Gene ID:

6950

### Uniprot

P17987

### Synonyms:

TCP1; CCT-alpha; CCT1; CCTa; D6S230E; TCP-1-alpha

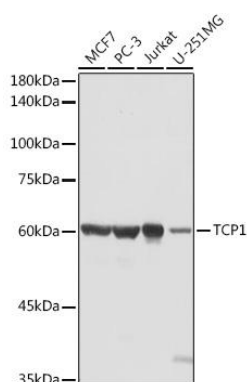
### Immunogen:

Recombinant fusion protein containing a sequence corresponding to amino acids 307-556 of human TCP1 (NP\_110379.2).

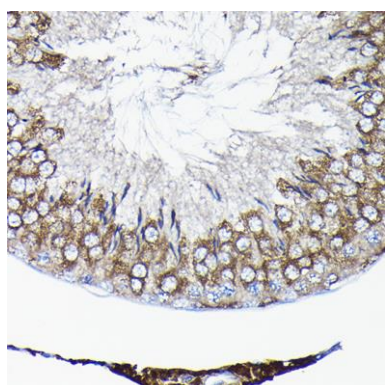
### Storage:

Store at -20°C. Avoid freeze / thaw cycles. Buffer: PBS with 0.02% sodium azide, 50% glycerol, pH7.3.

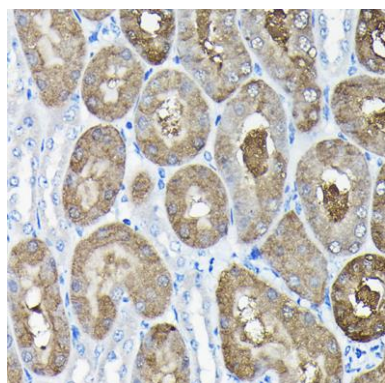
## Product Images



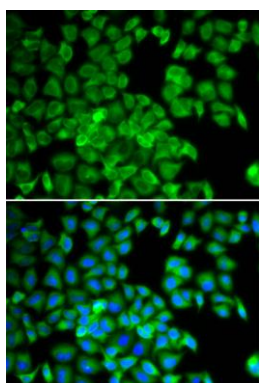
Western blot analysis of extracts of various cell lines, using TCP1 antibody (CAB13364) at 1:1000 dilution. Secondary antibody: HRP Goat Anti-Rabbit IgG (H+L) (CABS014) at 1:10000 dilution. Lysates/proteins: 25ug per lane. Blocking buffer: 3% nonfat dry milk in TBST. Detection: ECL Basic Kit (CABM00020). Exposure time: 5s.



Immunohistochemistry of paraffin-embedded rat testis using TCP1 Rabbit pAb (CAB13364) at dilution of 1:100 (40x lens).



Immunohistochemistry of paraffin-embedded mouse kidney using TCP1 Rabbit pAb (CAB13364) at dilution of 1:100 (40x lens).



Immunofluorescence analysis of U2OS cells using TCP1 antibody (CAB13364). Blue: DAPI for nuclear staining.