

# VCP Rabbit Polyclonal Antibody



CAB13368

---

## Product Information

### Size:

20uL, 50uL, 100uL, 200uL

### Observed MW:

90KDa

### Calculated MW:

89kDa

### Applications:

WB IHC IF

### Reactivity:

Human, Mouse, Rat

## Antibody Information

### Recommended dilutions:

WB 1:500 - 1:2000 IHC 1:50  
- 1:200 IF 1:50 - 1:200

### Source:

Rabbit

### Isotype:

IgG

### Purification:

Affinity purification

## Protein Background

The protein encoded by this gene is a member of a family that includes putative ATP-binding proteins involved in vesicle transport and fusion, 26S proteasome function, and assembly of peroxisomes. This protein, as a structural protein, is associated with clathrin, and heat-shock protein Hsc70, to form a complex. It has been implicated in a number of cellular events that are regulated during mitosis, including homotypic membrane fusion, spindle pole body function, and ubiquitin-dependent protein degradation.

## Immunogen information

### Gene ID:

7415

### Uniprot

P55072

### Synonyms:

VCP; ALS14; CDC48; CMT2Y; HEL-220; HEL-S-70; IBMPFD;  
IBMPFD1; TERA; p97

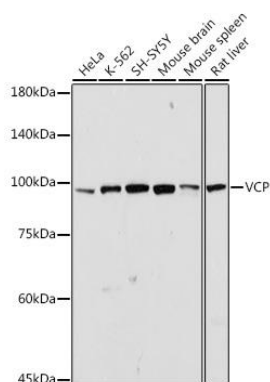
### Immunogen:

Recombinant fusion protein containing a sequence corresponding to amino acids 647-806 of human VCP (NP\_009057.1).

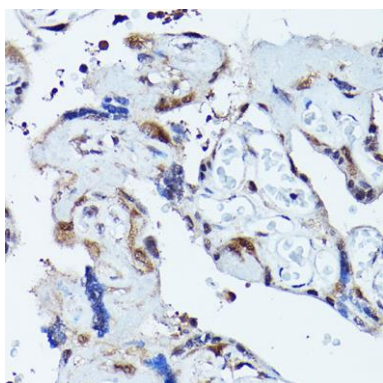
### Storage:

Store at -20°C. Avoid freeze / thaw cycles. Buffer: PBS with 0.02% sodium azide, 50% glycerol, pH7.3.

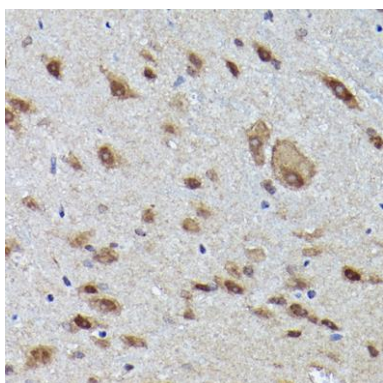
## Product Images



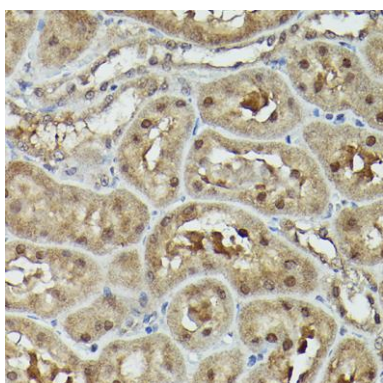
Western blot analysis of extracts of various cell lines, using VCP antibody (CAB13368) at 1:1000 dilution. Secondary antibody: HRP Goat Anti-Rabbit IgG (H+L) (CABS014) at 1:10000 dilution. Lysates/proteins: 25ug per lane. Blocking buffer: 3% nonfat dry milk in TBST. Detection: ECL Basic Kit (CABM00020). Exposure time: 30s.



Immunohistochemistry of paraffin-embedded human placenta using VCP Rabbit pAb (CAB13368) at dilution of 1:100 (40x lens).



Immunohistochemistry of paraffin-embedded mouse spinal cord using VCP Rabbit pAb (CAB13368) at dilution of 1:100 (40x lens).



Immunohistochemistry of paraffin-embedded rat kidney using VCP Rabbit pAb (CAB13368) at dilution of 1:100 (40x lens).