

# MAP4K3 Rabbit Polyclonal Antibody



CAB13375

---

## Product Information

### Size:

20uL, 50uL, 100uL, 200uL

### Observed MW:

### Calculated MW:

98kDa/100kDa/101kDa

### Applications:

IF

### Reactivity:

Human

## Antibody Information

### Recommended dilutions:

IF 1:50 - 1:200

### Source:

Rabbit

### Isotype:

IgG

### Purification:

Affinity purification

## Protein Background

This gene encodes a member of the mitogen-activated protein kinase kinase kinase kinase family. The encoded protein activates key effectors in cell signalling, among them c-Jun. Alternatively spliced transcripts encoding multiple isoforms have been observed for this gene.

## Immunogen information

### Gene ID:

8491

### Uniprot

Q8IVH8

### Synonyms:

MAP4K3; GLK; MAPK3; MEKK 3; MEKK3; RAB8IPL1

### Immunogen:

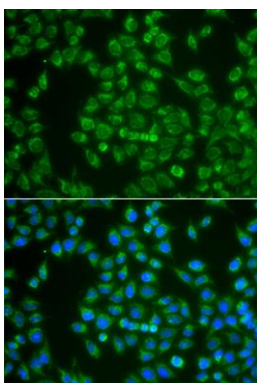
Recombinant fusion protein containing a sequence corresponding to amino acids 755-894 of human MAP4K3 (NP\_003609.2).

### Storage:

Store at -20°C. Avoid freeze / thaw cycles. Buffer: PBS with 0.02% sodium azide, 50% glycerol, pH7.3.

## Product Images

---



Immunofluorescence analysis of A549 cells using MAP4K3 antibody (CAB13375). Blue: DAPI for nuclear staining.