

MBTPS1 Rabbit Polyclonal Antibody



CAB13379

Product Information

Size:

20uL, 50uL, 100uL, 200uL

Observed MW:

Calculated MW:

117kDa

Applications:

IHC IF

Reactivity:

Human

Antibody Information

Recommended dilutions:

IHC 1:50 - 1:200 IF 1:50 - 1:200

Source:

Rabbit

Isotype:

IgG

Purification:

Affinity purification

Protein Background

This gene encodes a member of the subtilisin-like proprotein convertase family, which includes proteases that process protein and peptide precursors trafficking through regulated or constitutive branches of the secretory pathway. The encoded protein undergoes an initial autocatalytic processing event in the ER to generate a heterodimer which exits the ER and sorts to the cis/medial-Golgi where a second autocatalytic event takes place and the catalytic activity is acquired. It encodes a type 1 membrane bound protease which is ubiquitously expressed and regulates cholesterol or lipid homeostasis via cleavage of substrates at non-basic residues. Mutations in this gene may be associated with lysosomal dysfunction.

Immunogen information

Gene ID:

8720

Uniprot

Q14703

Synonyms:

MBTPS1; PCSK8; S1P; SKI-1

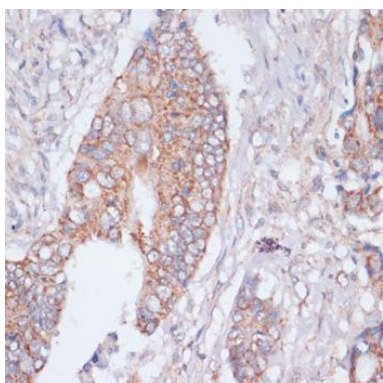
Immunogen:

Recombinant fusion protein containing a sequence corresponding to amino acids 803-1052 of human MBTPS1 (NP_003782.1).

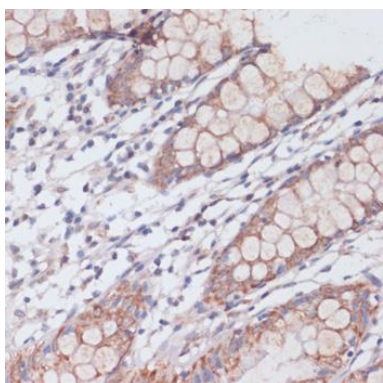
Storage:

Store at -20°C. Avoid freeze / thaw cycles. Buffer: PBS with 0.02% sodium azide, 50% glycerol, pH7.3.

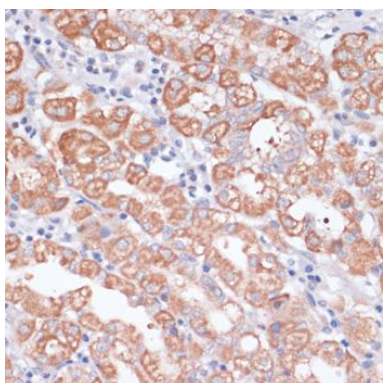
Product Images



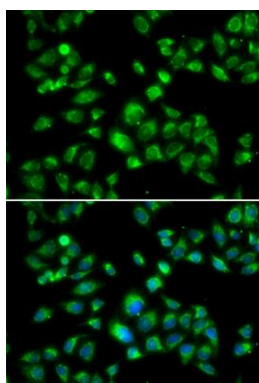
Immunohistochemistry of paraffin-embedded human colon cancer using MBTPS1 antibody (CAB13379) at dilution of 1:100 (40x lens).



Immunohistochemistry of paraffin-embedded human colon using MBTPS1 antibody (CAB13379) at dilution of 1:100 (40x lens).



Immunohistochemistry of paraffin-embedded human stomach using MBTPS1 antibody (CAB13379) at dilution of 1:100 (40x lens).



Immunofluorescence analysis of U2OS cells using MBTPS1 antibody (CAB13379). Blue: DAPI for nuclear staining.