

TNFRSF11A Rabbit Polyclonal Antibody



CAB13382

Product Information

Size:

20uL, 50uL, 100uL, 200uL

Observed MW:

90kDa

Calculated MW:

28kDa/32kDa/36kDa/56kDa/
64kDa/66kDa

Applications:

WB IHC IF

Reactivity:

Human, Mouse, Rat

Antibody Information

Recommended dilutions:

WB 1:500 - 1:2000 IHC 1:50
- 1:100 IF 1:50 - 1:100

Source:

Rabbit

Isotype:

IgG

Purification:

Affinity purification

Protein Background

The protein encoded by this gene is a member of the TNF-receptor superfamily. This receptors can interact with various TRAF family proteins, through which this receptor induces the activation of NF-kappa B and MAPK8/JNK. This receptor and its ligand are important regulators of the interaction between T cells and dendritic cells. This receptor is also an essential mediator for osteoclast and lymph node development. Mutations at this locus have been associated with familial expansile osteolysis, autosomal recessive osteopetrosis, and Paget disease of bone. Alternatively spliced transcript variants have been described for this locus.

Immunogen information

Gene ID:

8792

Uniprot

Q9Y6Q6

Synonyms:

TNFRSF11A; CD265; FEO; LOH18CR1; ODFR; OFE; OPTB7; OST5;
PDB2; RANK; TRANCER

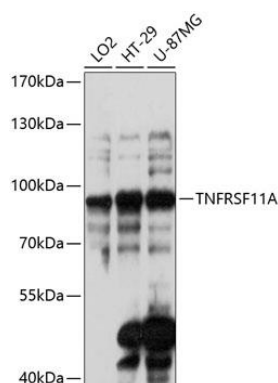
Immunogen:

Recombinant fusion protein containing a sequence corresponding to amino acids 466-616 of human TNFRSF11A (NP_003830.1).

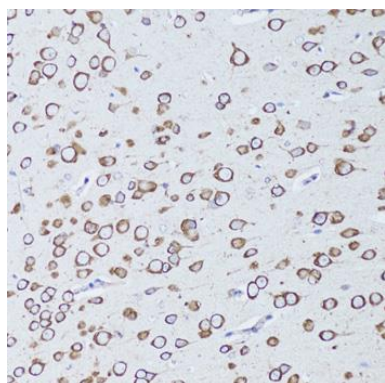
Storage:

Store at -20°C. Avoid freeze / thaw cycles. Buffer: PBS with 0.02% sodium azide, 50% glycerol, pH7.3.

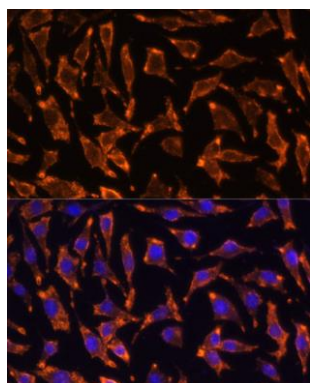
Product Images



Western blot analysis of extracts of various cell lines, using TNFRSF11A antibody (CAB13382) at 1:3000 dilution. Secondary antibody: HRP Goat Anti-Rabbit IgG (H+L) (CABS014) at 1:10000 dilution. Lysates/proteins: 25ug per lane. Blocking buffer: 3% nonfat dry milk in TBST. Detection: ECL Basic Kit (CABM00020). Exposure time: 30s.



Immunohistochemistry of paraffin-embedded mouse brain using TNFRSF11A antibody (CAB13382) at dilution of 1:100 (20x lens).



Immunofluorescence analysis of L929 cells using TNFRSF11A Polyclonal Antibody (CAB13382) at dilution of 1:100 (40x lens). Blue: DAPI for nuclear staining.