

pum1 Rabbit Polyclonal Antibody



CAB13389

Product Information

Size:

20uL, 50uL, 100uL, 200uL

Observed MW:

126kDa

Calculated MW:

119kDa/124kDa/126kDa

Applications:

WB IF

Reactivity:

Human, Mouse

Antibody Information

Recommended dilutions:

WB 1:500 - 1:2000 IF 1:50 - 1:200

Source:

Rabbit

Isotype:

IgG

Purification:

Affinity purification

Protein Background

This gene encodes a member of the PUF family, evolutionarily conserved RNA-binding proteins related to the Pumilio proteins of *Drosophila* and the fem-3 mRNA binding factor proteins of *C. elegans*. The encoded protein contains a sequence-specific RNA binding domain comprised of eight repeats and N- and C-terminal flanking regions, and serves as a translational regulator of specific mRNAs by binding to their 3' untranslated regions. The evolutionarily conserved function of the encoded protein in invertebrates and lower vertebrates suggests that the human protein may be involved in translational regulation of embryogenesis, and cell development and differentiation. Alternatively spliced transcript variants encoding different isoforms have been described.

Immunogen information

Gene ID:

9698

Uniprot

Q14671

Synonyms:

PUM1; HSPUM; PUMH; PUMH1; PUML1

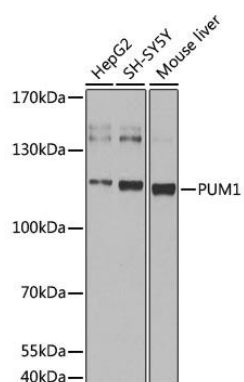
Immunogen:

Recombinant fusion protein containing a sequence corresponding to amino acids 1-130 of human pum1 (NP_055491.1).

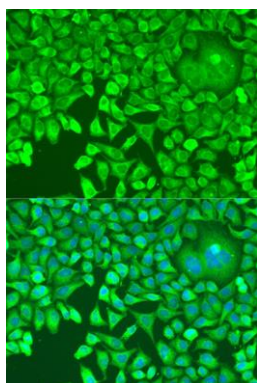
Storage:

Store at -20°C. Avoid freeze / thaw cycles. Buffer: PBS with 0.02% sodium azide, 50% glycerol, pH7.3.

Product Images



Western blot analysis of extracts of various cell lines, using pum1 antibody (CAB13389) at 1:1000 dilution. Secondary antibody: HRP Goat Anti-Rabbit IgG (H+L) (CABS014) at 1:10000 dilution. Lysates/proteins: 25ug per lane. Blocking buffer: 3% nonfat dry milk in TBST. Detection: ECL Basic Kit (CABM00020). Exposure time: 30s.



Immunofluorescence analysis of U2OS cells using pum1 antibody (CAB13389) at dilution of 1:100. Blue: DAPI for nuclear staining.