

EDIL3 Rabbit Polyclonal Antibody



CAB13391

Product Information

Size:

20uL, 50uL, 100uL, 200uL

Observed MW:

Calculated MW:

52kDa/53kDa

Applications:

IHC

Reactivity:

Human

Protein Background

The protein encoded by this gene is an integrin ligand. It plays an important role in mediating angiogenesis and may be important in vessel wall remodeling and development. It also influences endothelial cell behavior.

Immunogen information

Gene ID:

10085

Uniprot

O43854

Synonyms:

EDIL3; DEL1

Antibody Information

Recommended dilutions:

IHC 1:50 - 1:200

Source:

Rabbit

Isotype:

IgG

Purification:

Affinity purification

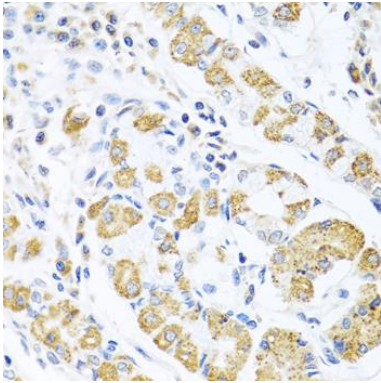
Immunogen:

Recombinant fusion protein containing a sequence corresponding to amino acids 250-480 of human EDIL3 (NP_005702.3).

Storage:

Store at -20°C. Avoid freeze / thaw cycles. Buffer: PBS with 0.02% sodium azide, 50% glycerol, pH7.3.

Product Images



Immunohistochemistry of paraffin-embedded human stomach using EDIL3 antibody (CAB13391) at dilution of 1:100 (40x lens).