

# TESK2 Rabbit Polyclonal Antibody



CAB13395

## Product Information

### Size:

20uL, 50uL, 100uL, 200uL

### Observed MW:

64kDa

### Calculated MW:

60kDa/61kDa/63kDa

### Applications:

WB IF

### Reactivity:

Human, Mouse

## Antibody Information

### Recommended dilutions:

WB 1:500 - 1:2000 IF 1:50 - 1:200

### Source:

Rabbit

### Isotype:

IgG

### Purification:

Affinity purification

## Protein Background

This gene product is a serine/threonine protein kinase that contains an N-terminal protein kinase domain that is structurally similar to the kinase domains of testis-specific protein kinase-1 and the LIM motif-containing protein kinases (LIMKs). Its overall structure is most related to the former, indicating that it belongs to the TESK subgroup of the LIMK/TESK family of protein kinases. This gene is predominantly expressed in testis and prostate. The developmental expression pattern of the rat gene in testis suggests an important role for this gene in meiotic stages and/or early stages of spermiogenesis. Alternative splicing results in multiple transcript variants.

## Immunogen information

### Gene ID:

10420

### Uniprot

Q96S53

### Synonyms:

TESK2

### Immunogen:

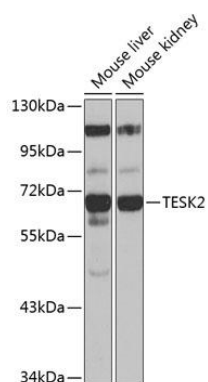
Recombinant fusion protein containing a sequence corresponding to amino acids 302-571 of human TESK2 (NP\_009101.2).

### Storage:

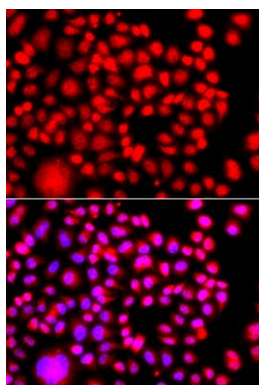
Store at -20°C. Avoid freeze / thaw cycles. Buffer: PBS with 0.02% sodium azide, 50% glycerol, pH7.3.

## Product Images

---



Western blot analysis of extracts of various cell lines, using TESK2 antibody (CAB13395) at 1:1000 dilution. Secondary antibody: HRP Goat Anti-Rabbit IgG (H+L) (CABS014) at 1:10000 dilution. Lysates/proteins: 25ug per lane. Blocking buffer: 3% nonfat dry milk in TBST. Detection: ECL Enhanced Kit (CABM00021). Exposure time: 1s.



Immunofluorescence analysis of A549 cells using TESK2 antibody (CAB13395). Blue: DAPI for nuclear staining.