

# PTGES3 Rabbit Polyclonal Antibody



CAB13399

## Product Information

### Size:

20uL, 50uL, 100uL, 200uL

### Observed MW:

### Calculated MW:

14kDa/16kDa/18kDa

### Applications:

IF

### Reactivity:

Human

## Antibody Information

### Recommended dilutions:

IF 1:50 - 1:200

### Source:

Rabbit

### Isotype:

IgG

### Purification:

Affinity purification

## Protein Background

This gene encodes an enzyme that converts prostaglandin endoperoxide H2 (PGH2) to prostaglandin E2 (PGE2). This protein functions as a co-chaperone with heat shock protein 90 (HSP90), localizing to response elements in DNA and disrupting transcriptional activation complexes. Alternative splicing results in multiple transcript variants. There are multiple pseudogenes of this gene on several different chromosomes.

## Immunogen information

### Gene ID:

10728

### Uniprot

Q15185

### Synonyms:

PTGES3; P23; TEBP; cPGES

### Immunogen:

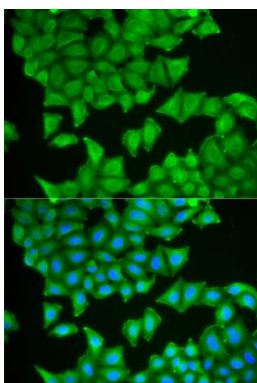
Recombinant fusion protein containing a sequence corresponding to amino acids 1-110 of human PTGES3 (NP\_006592.3).

### Storage:

Store at -20°C. Avoid freeze / thaw cycles. Buffer: PBS with 0.02% sodium azide, 50% glycerol, pH7.3.

## Product Images

---



Immunofluorescence analysis of HeLa cells using PTGES3 antibody (CAB13399). Blue: DAPI for nuclear staining.