

COPS5 Rabbit Polyclonal Antibody



CAB13401

Product Information

Size:

20uL, 50uL, 100uL, 200uL

Observed MW:

37kDa

Calculated MW:

37kDa

Applications:

WB IHC IF

Reactivity:

Human, Mouse, Rat

Antibody Information

Recommended dilutions:

WB 1:500 - 1:2000 IHC 1:50
- 1:100 IF 1:50 - 1:100

Source:

Rabbit

Isotype:

IgG

Purification:

Affinity purification

Protein Background

The protein encoded by this gene is one of the eight subunits of COP9 signalosome, a highly conserved protein complex that functions as an important regulator in multiple signaling pathways. The structure and function of COP9 signalosome is similar to that of the 19S regulatory particle of 26S proteasome. COP9 signalosome has been shown to interact with SCF-type E3 ubiquitin ligases and act as a positive regulator of E3 ubiquitin ligases. This protein is reported to be involved in the degradation of cyclin-dependent kinase inhibitor CDKN1B/p27Kip1. It is also known to be a coactivator that increases the specificity of JUN/AP1 transcription factors.

Immunogen information

Gene ID:

10987

Uniprot

Q92905

Synonyms:

COPS5; CSN5; JAB1; MOV-34; SGN5

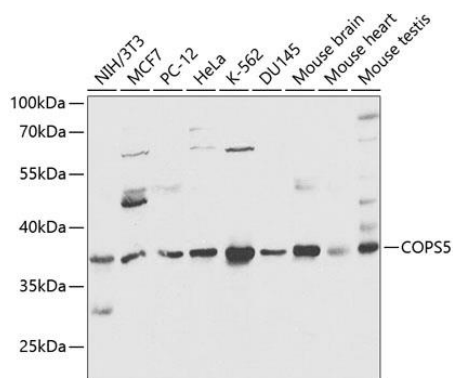
Immunogen:

Recombinant fusion protein containing a sequence corresponding to amino acids 1-334 of human COPS5 (NP_006828.2).

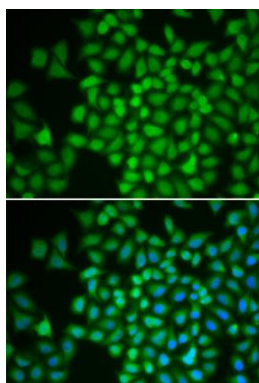
Storage:

Store at -20°C. Avoid freeze / thaw cycles. Buffer: PBS with 0.02% sodium azide, 50% glycerol, pH7.3.

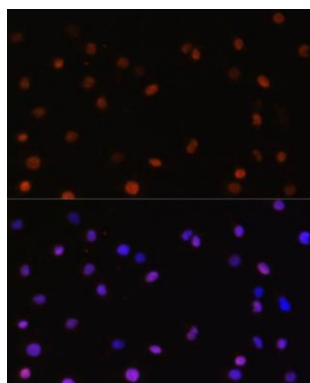
Product Images



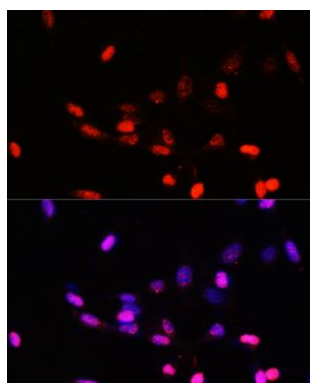
Western blot analysis of extracts of various cell lines, using COPS5 antibody (CAB13401) at 1:1000 dilution. Secondary antibody: HRP Goat Anti-Rabbit IgG (H+L) (CABS014) at 1:10000 dilution. Lysates/proteins: 25ug per lane. Blocking buffer: 3% nonfat dry milk in TBST.



Immunofluorescence analysis of HeLa cells using COPS5 antibody (CAB13401). Blue: DAPI for nuclear staining.



Immunofluorescence analysis of C6 cells using COPS5 antibody (CAB13401) at dilution of 1:100. Blue: DAPI for nuclear staining.



Immunofluorescence analysis of NIH/3T3 cells using COPS5 antibody (CAB13401) at dilution of 1:100. Blue: DAPI for nuclear staining.