

TARDBP Rabbit Polyclonal Antibody



CAB13404

Product Information

Size:

20uL, 50uL, 100uL, 200uL

Observed MW:

45kDa

Calculated MW:

31kDa/44kDa

Applications:

WB IF

Reactivity:

Human, Mouse, Rat

Protein Background

HIV-1, the causative agent of acquired immunodeficiency syndrome (AIDS), contains an RNA genome that produces a chromosomally integrated DNA during the replicative cycle. Activation of HIV-1 gene expression by the transactivator Tat is dependent on an RNA regulatory element (TAR) located downstream of the transcription initiation site. The protein encoded by this gene is a transcriptional repressor that binds to chromosomally integrated TAR DNA and represses HIV-1 transcription. In addition, this protein regulates alternate splicing of the CFTR gene. A similar pseudogene is present on chromosome 20.

Immunogen information

Gene ID:

23435

Uniprot

Q13148

Synonyms:

ALS10; TDP-43; TARDBP; TDP43

Antibody Information

Recommended dilutions:

WB 1:500 - 1:2000 IF 1:50 - 1:200

Source:

Rabbit

Isotype:

IgG

Purification:

Affinity purification

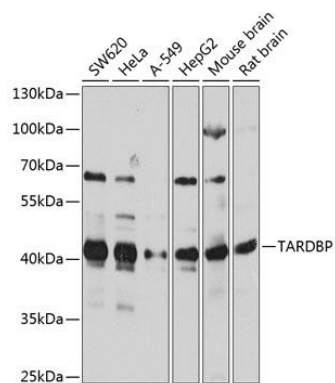
Immunogen:

Recombinant fusion protein containing a sequence corresponding to amino acids 1-100 of human TARDBP (NP_031401.1).

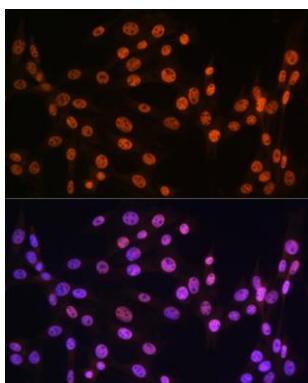
Storage:

Store at -20°C. Avoid freeze / thaw cycles. Buffer: PBS with 0.02% sodium azide, 50% glycerol, pH7.3.

Product Images



Western blot analysis of extracts of various cell lines, using TARDBP antibody (CAB13404) at 1:1000 dilution. Secondary antibody: HRP Goat Anti-Rabbit IgG (H+L) (CABS014) at 1:10000 dilution. Lysates/proteins: 25ug per lane. Blocking buffer: 3% nonfat dry milk in TBST. Detection: ECL Basic Kit (CABM00020). Exposure time: 10s.



Immunofluorescence analysis of NIH-3T3 cells using TARDBP Rabbit pAb (CAB13404) at dilution of 1:100 (40x lens). Blue: DAPI for nuclear staining.