

TARDBP Rabbit Polyclonal Antibody



CAB13405

Product Information

Size:

20uL, 50uL, 100uL, 200uL

Observed MW:

45kDa

Calculated MW:

31kDa/44kDa

Applications:

WB IHC IF

Reactivity:

Human, Mouse, Rat

Protein Background

HIV-1, the causative agent of acquired immunodeficiency syndrome (AIDS), contains an RNA genome that produces a chromosomally integrated DNA during the replicative cycle. Activation of HIV-1 gene expression by the transactivator Tat is dependent on an RNA regulatory element (TAR) located downstream of the transcription initiation site. The protein encoded by this gene is a transcriptional repressor that binds to chromosomally integrated TAR DNA and represses HIV-1 transcription. In addition, this protein regulates alternate splicing of the CFTR gene. A similar pseudogene is present on chromosome 20.

Immunogen information

Gene ID:

23435

Uniprot

Q13148

Synonyms:

ALS10; TDP-43; TARDBP; TDP43

Antibody Information

Recommended dilutions:

WB 1:500 - 1:2000 IHC 1:50
- 1:200 IF 1:50 - 1:200

Source:

Rabbit

Isotype:

IgG

Purification:

Affinity purification

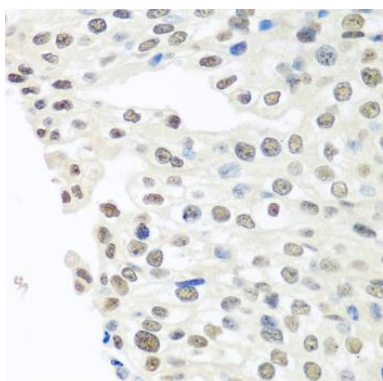
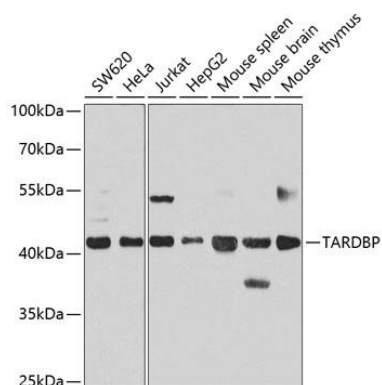
Immunogen:

Recombinant fusion protein containing a sequence corresponding to amino acids 1-100 of human TARDBP (NP_031401.1).

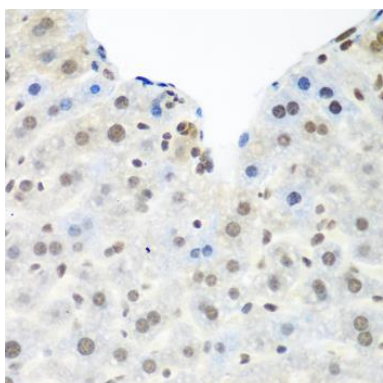
Storage:

Store at -20°C. Avoid freeze / thaw cycles. Buffer: PBS with 0.02% sodium azide, 50% glycerol, pH7.3.

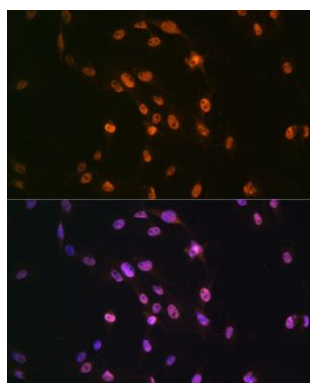
Product Images



Immunohistochemistry of paraffin-embedded human prostate cancer using TARDBP antibody (CAB13405) at dilution of 1:100 (40x lens).



Immunohistochemistry of paraffin-embedded mouse liver using TARDBP antibody (CAB13405) at dilution of 1:100 (40x lens).



Immunofluorescence analysis of C6 cells using TARDBP Rabbit pAb (CAB13405) at dilution of 1:100 (40x lens). Blue: DAPI for nuclear staining.