

SMPX Rabbit Polyclonal Antibody



CAB13408

Product Information

Size:

20uL, 50uL, 100uL, 200uL

Observed MW:

Calculated MW:

9kDa

Applications:

IF

Reactivity:

Human

Antibody Information

Recommended dilutions:

IF 1:50 - 1:200

Source:

Rabbit

Isotype:

IgG

Purification:

Affinity purification

Protein Background

This gene encodes a small protein that has no known functional domains. Mutations in this gene are a cause of X-linked deafness-4, and the encoded protein may play a role in the maintenance of inner ear cells subjected to mechanical stress. Alternatively spliced transcript variants have been observed for this gene.

Immunogen information

Gene ID:

23676

Uniprot

Q9UHP9

Synonyms:

SMPX; DFN6; DFNX4

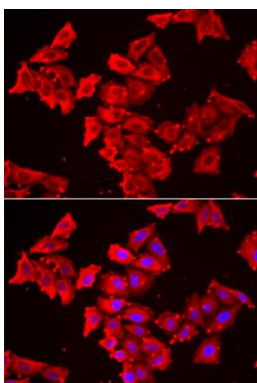
Immunogen:

Recombinant fusion protein containing a sequence corresponding to amino acids 1-88 of human SMPX (NP_055147.1).

Storage:

Store at -20°C. Avoid freeze / thaw cycles. Buffer: PBS with 0.02% sodium azide, 50% glycerol, pH7.3.

Product Images



Immunofluorescence analysis of HeLa cells using SMPX antibody (CAB13408). Blue: DAPI for nuclear staining.