

POC1A Rabbit Polyclonal Antibody



CAB13409

Product Information

Size:

20uL, 50uL, 100uL, 200uL

Observed MW:

Calculated MW:

39kDa/40kDa/45kDa

Applications:

IF

Reactivity:

Human

Antibody Information

Recommended dilutions:

IF 1:50 - 1:200

Source:

Rabbit

Isotype:

IgG

Purification:

Affinity purification

Protein Background

POC1 proteins contain an N-terminal WD40 domain and a C-terminal coiled coil domain and are part of centrosomes. They play an important role in basal body and cilia formation. This gene encodes one of the two POC1 proteins found in humans. Mutations in this gene result in short stature, onychodysplasia, facial dysmorphism, and hypotrichosis (SOFT) syndrome.

Immunogen information

Gene ID:

25886

Uniprot

Q8NBTO

Synonyms:

POC1A; PIX2; SOFT; WDR51A

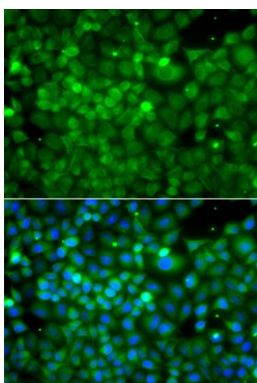
Immunogen:

Recombinant fusion protein containing a sequence corresponding to amino acids 138-407 of human POC1A (NP_056241.3).

Storage:

Store at -20°C. Avoid freeze / thaw cycles. Buffer: PBS with 0.02% sodium azide, 50% glycerol, pH7.3.

Product Images



Immunofluorescence analysis of A549 cells using POC1A antibody (CAB13409). Blue: DAPI for nuclear staining.