

CHMP2B Rabbit Polyclonal Antibody



CAB13410

Product Information

Size:

20uL, 50uL, 100uL, 200uL

Observed MW:

28kDa

Calculated MW:

19kDa/23kDa

Applications:

WB IHC IF

Reactivity:

Human, Mouse

Protein Background

This gene encodes a component of the heteromeric ESCRT-III complex (Endosomal Sorting Complex Required for Transport III) that functions in the recycling or degradation of cell surface receptors. ESCRT-III functions in the concentration and invagination of ubiquitinated endosomal cargos into intraluminal vesicles. The protein encoded by this gene is found as a monomer in the cytosol or as an oligomer in ESCRT-III complexes on endosomal membranes. It is expressed in neurons of all major regions of the brain. Mutations in this gene result in one form of familial frontotemporal lobar degeneration.

Immunogen information

Gene ID:

25978

Uniprot

Q9UQN3

Synonyms:

CHMP2B; ALS17; CHMP2.5; DMT1; VPS2-2; VPS2B

Antibody Information

Recommended dilutions:

WB 1:500 - 1:2000 IHC 1:50
- 1:200 IF 1:50 - 1:200

Source:

Rabbit

Isotype:

IgG

Purification:

Affinity purification

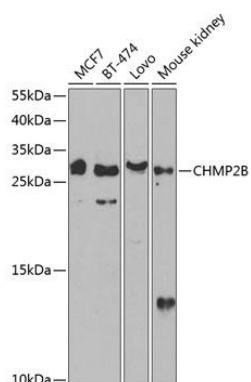
Immunogen:

Recombinant fusion protein containing a sequence corresponding to amino acids 1-213 of human CHMP2B (NP_054762.2).

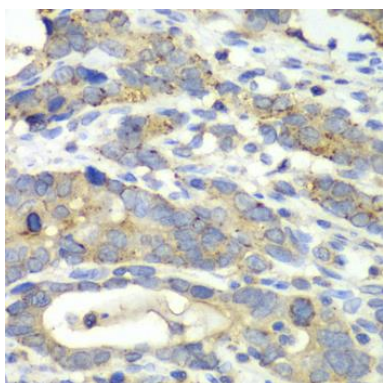
Storage:

Store at -20°C. Avoid freeze / thaw cycles. Buffer: PBS with 0.02% sodium azide, 50% glycerol, pH7.3.

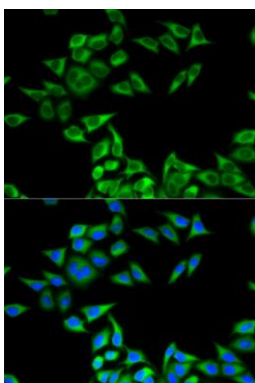
Product Images



Western blot analysis of extracts of various cell lines, using CHMP2B antibody (CAB13410) at 1:1000 dilution. Secondary antibody: HRP Goat Anti-Rabbit IgG (H+L) (CABS014) at 1:10000 dilution. Lysates/proteins: 25ug per lane. Blocking buffer: 3% nonfat dry milk in TBST. Detection: ECL Basic Kit (CABM00020). Exposure time: 30s.



Immunohistochemistry of paraffin-embedded human gastric cancer using CHMP2B antibody (CAB13410) at dilution of 1:100 (40x lens).



Immunofluorescence analysis of MCF-7 cells using CHMP2B antibody (CAB13410). Blue: DAPI for nuclear staining.