

# PELP1 Rabbit Polyclonal Antibody



CAB13414

## Product Information

### Size:

20uL, 50uL, 100uL, 200uL

### Observed MW:

### Calculated MW:

119kDa

### Applications:

IHC

### Reactivity:

Human, Mouse, Rat

## Antibody Information

### Recommended dilutions:

IHC 1:50 - 1:200

### Source:

Rabbit

### Isotype:

IgG

### Purification:

Affinity purification

## Protein Background

This gene encodes a transcription factor which coactivates transcription of estrogen receptor responsive genes and corepresses genes activated by other hormone receptors or sequence-specific transcription factors. Expression of this gene is regulated by both members of the estrogen receptor family. This gene may be involved in the progression of several types of cancer. Alternative splicing results in multiple transcript variants.

## Immunogen information

### Gene ID:

27043

### Uniprot

Q8IZL8

### Synonyms:

PELP1; MNAR; P160; proline

### Immunogen:

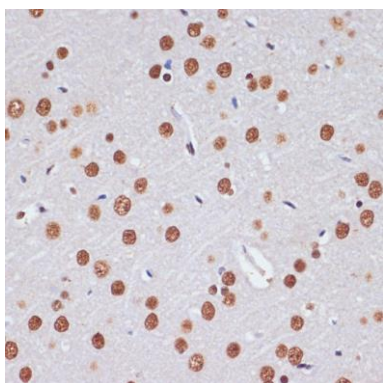
Recombinant protein of human PELP1

### Storage:

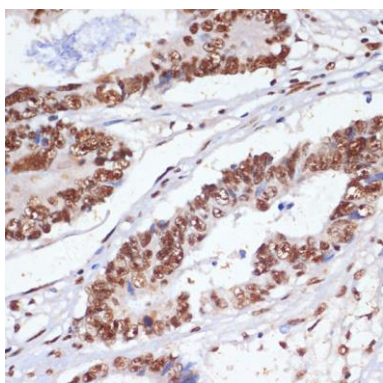
Store at -20°C. Avoid freeze / thaw cycles. Buffer: PBS with 0.02% sodium azide, 50% glycerol, pH7.3.

## Product Images

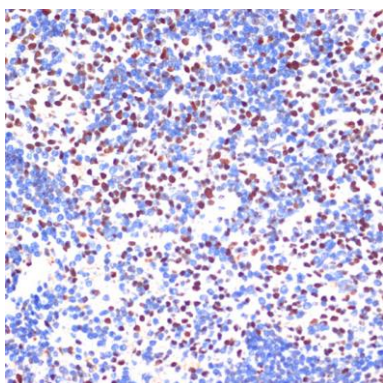
---



Immunohistochemistry of paraffin-embedded rat brain using PELP1 antibody (CAB13414) at dilution of 1:100 (40x lens).



Immunohistochemistry of paraffin-embedded human colon carcinoma using PELP1 antibody (CAB13414) at dilution of 1:100 (40x lens).



Immunohistochemistry of paraffin-embedded mouse spleen using PELP1 antibody (CAB13414) at dilution of 1:100 (40x lens).