

# KLF15 Rabbit Polyclonal Antibody



CAB13420

---

## Product Information

### Size:

20uL, 50uL, 100uL, 200uL

### Observed MW:

### Calculated MW:

43kDa

### Applications:

IF

### Reactivity:

Human

## Antibody Information

### Recommended dilutions:

IF 1:50 - 1:200

### Source:

Rabbit

### Isotype:

IgG

### Purification:

Affinity purification

## Protein Background

### Immunogen information

#### Gene ID:

28999

#### Uniprot

Q9UIH9

#### Synonyms:

KLF15; KKLf

#### Immunogen:

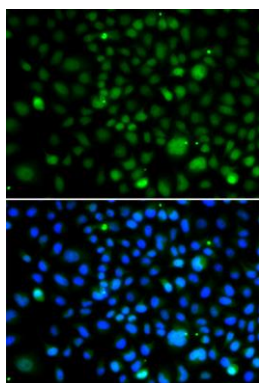
Recombinant fusion protein containing a sequence corresponding to amino acids 1-260 of human KLF15 (NP\_054798.1).

#### Storage:

Store at -20°C. Avoid freeze / thaw cycles. Buffer: PBS with 0.02% sodium azide, 50% glycerol, pH7.3.

## Product Images

---



Immunofluorescence analysis of A549 cells using KLF15 antibody (CAB13420). Blue: DAPI for nuclear staining.