

# UBIAD1 Rabbit Polyclonal Antibody



CAB13421

---

## Product Information

### Size:

20uL, 50uL, 100uL, 200uL

### Observed MW:

37kDa

### Calculated MW:

19kDa/36kDa

### Applications:

WB IHC

### Reactivity:

Human, Mouse

## Antibody Information

### Recommended dilutions:

WB 1:500 - 1:2000 IHC 1:50  
- 1:200

### Source:

Rabbit

### Isotype:

IgG

### Purification:

Affinity purification

## Protein Background

This gene encodes a protein thought to be involved in cholesterol and phospholipid metabolism. Mutations in this gene are associated with Schnyder crystalline corneal dystrophy.

## Immunogen information

### Gene ID:

29914

### Uniprot

Q9Y5Z9

### Synonyms:

UBIAD1; SCCD; TERE1

### Immunogen:

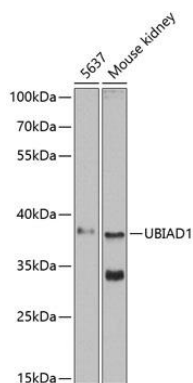
A synthetic peptide corresponding to a sequence within amino acids 200 to the C-terminus of human UBIAD1 (NP\_037451.1).

### Storage:

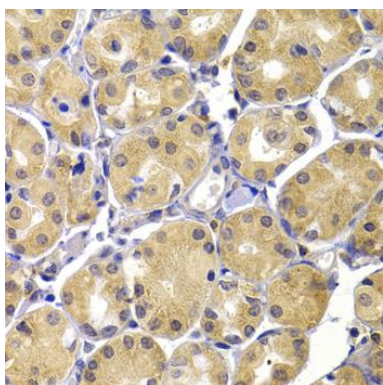
Store at -20°C. Avoid freeze / thaw cycles. Buffer: PBS with 0.02% sodium azide, 50% glycerol, pH7.3.

## Product Images

---



Western blot analysis of extracts of various cell lines, using UBIAD1 antibody (CAB13421) at 1:500 dilution. Secondary antibody: HRP Goat Anti-Rabbit IgG (H+L) (CABS014) at 1:10000 dilution. Lysates/proteins: 25ug per lane. Blocking buffer: 3% nonfat dry milk in TBST. Detection: ECL Enhanced Kit (CABM00021). Exposure time: 60s.



Immunohistochemistry of paraffin-embedded human stomach using UBIAD1 antibody (CAB13421) at dilution of 1:100 (40x lens).