

CXXC1 Rabbit Polyclonal Antibody



CAB13423

Product Information

Size:

20uL, 50uL, 100uL, 200uL

Observed MW:

80kDa

Calculated MW:

75kDa/76kDa

Applications:

WB IF IP

Reactivity:

Human, Mouse

Antibody Information

Recommended dilutions:

WB 1:500 - 1:2000 IF 1:50 -
1:200 IP 1:20 - 1:50

Source:

Rabbit

Isotype:

IgG

Purification:

Affinity purification

Protein Background

This gene encodes a protein that functions as a transcriptional activator that binds specifically to non-methylated CpG motifs through its CXXC domain. The protein is a component of the SETD1 complex, regulates gene expression and is essential for vertebrate development.

Immunogen information

Gene ID:

30827

Uniprot

Q9P0U4

Synonyms:

CXXC1; 2410002I16Rik; 5830420C16Rik; CFP1; CGBP; HsT2645;
PCCX1; PHF18; SPP1; ZCGPC1; hCGBP

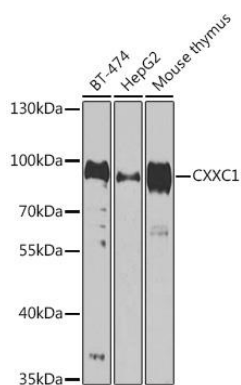
Immunogen:

Recombinant fusion protein containing a sequence corresponding to amino acids 1-210 of human CXXC1 (NP_001095124.1).

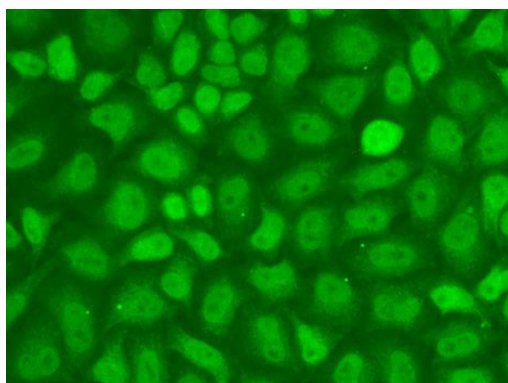
Storage:

Store at -20°C. Avoid freeze / thaw cycles. Buffer: PBS with 0.02% sodium azide, 50% glycerol, pH7.3.

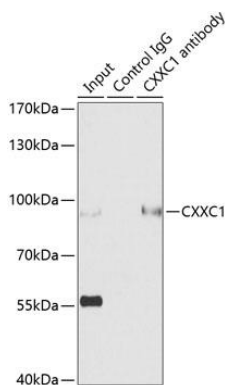
Product Images



Western blot analysis of extracts of various cell lines, using CXXC1 antibody (CAB13423) at 1:1000 dilution. Secondary antibody: HRP Goat Anti-Rabbit IgG (H+L) (CABS014) at 1:10000 dilution. Lysates/proteins: 25ug per lane. Blocking buffer: 3% nonfat dry milk in TBST. Detection: ECL Enhanced Kit (CABM00021). Exposure time: 90s.



Immunofluorescence analysis of A-549 cells using CXXC1 antibody (CAB13423).



Immunoprecipitation analysis of 200ug extracts of HepG2 cells using 3ug CXXC1 antibody (CAB13423). Western blot was performed from the immunoprecipitate using CXXC1 antibody (CAB13423) at a dilution of 1:500.