

PHF11 Rabbit Polyclonal Antibody



CAB13426

Product Information

Size:

20uL, 50uL, 100uL, 200uL

Observed MW:

34kDa

Calculated MW:

33kDa/37kDa

Applications:

WB IHC IF

Reactivity:

Human, Mouse, Rat

Protein Background

This gene encodes a protein containing a PHD (plant homeodomain) type zinc finger. This gene has been identified in some studies as a candidate gene for asthma. Naturally-occurring readthrough transcription may occur from the upstream SETDB2 (SET domain bifurcated 2) gene to this locus. Alternative splicing results in multiple transcript variants.

Immunogen information

Gene ID:

51131

Uniprot

Q9UIL8

Synonyms:

PHF11; APY; BCAP; IGEL; IGER; IGHER; NY-REN-34; NYREN34

Antibody Information

Recommended dilutions:

WB 1:500 - 1:2000 IHC 1:50
- 1:200 IF 1:50 - 1:200

Source:

Rabbit

Isotype:

IgG

Purification:

Affinity purification

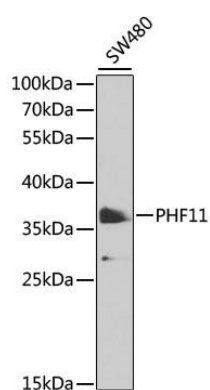
Immunogen:

Recombinant fusion protein containing a sequence corresponding to amino acids 1-292 of human PHF11 (NP_001035533.1).

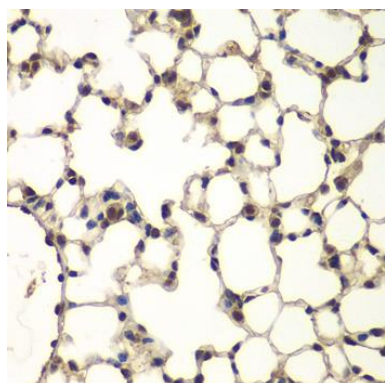
Storage:

Store at -20°C. Avoid freeze / thaw cycles. Buffer: PBS with 0.02% sodium azide, 50% glycerol, pH7.3.

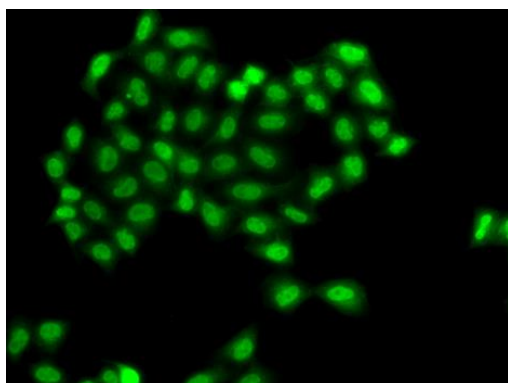
Product Images



Western blot analysis of extracts of SW480 cells, using PHF11 antibody (CAB13426) at 1:1000 dilution. Secondary antibody: HRP Goat Anti-Rabbit IgG (H+L) (CABS014) at 1:10000 dilution. Lysates/proteins: 25ug per lane. Blocking buffer: 3% nonfat dry milk in TBST. Detection: ECL Basic Kit (CABM00020). Exposure time: 90s.



Immunohistochemistry of paraffin-embedded mouse lung using PHF11 antibody (CAB13426) at dilution of 1:100 (40x lens).



Immunofluorescence analysis of A549 cells using PHF11 antibody (CAB13426).